



**iKkwit<sup>MC</sup>.com**  
CENDRIER ET MOBILIER URBAINS  
URBAN ASHTRAY AND FURNITURE

*Une idée Québécoise!  
FABRIQUÉ au Québec Canada, Amérique!*

*A Quebec's idea!  
MADE IN, Quebec Canada, America!*



La solution pour un environnement **plus vert**

### Informations sur les produits I Kkwit™

Cendriers, poubelles, bacs à recyclage, supports à vélos, îlots de récupération, supports à sacs de golf, supports à bidons, bancs de parc, tables pic-nic, bollards, boîtes à menu DEL, produits sur demande

The solution for a **greener** environment

### I Kkwit™ products Informations

Ashtrays, Garbage bins, Recycle bins, Bicycle Racks, Recycling Station, Stands for golf bags, Empty windshield washer stackers, Benches, Pic-nic and bistro tables, Bollards, LED Menu Boxes, Custom products



**iKkwit<sup>MC</sup><sub>TM</sub>.com**  
**CENDRIER ET MOBILIER URBAINS**  
**URBAN ASHTRAY AND FURNITURE**



La solution pour un environnement **plus vert**

The solution for a **greener** environment

438 270-7676 • [www.ikkwit.com](http://www.ikkwit.com)

# CONTENTS



Exterior Ashtrays	5
Garbage and Recycle Bins	9
Recycling Stations	13
Benches, Picnic Tables and Chairs	15
Bistro and Terrace Tables	18
Kaktus™ Tables	21
Rack@Bikes™ Bicycle Racks	23
Bollards and Fences	27
Rack@Golf™ Golf Bags	29
Rack@Wash™ Windshield Washer Stackers	31
LED menu and/or message boxes	32
Custom Products and on Request	35
Distributed Products	40
Price list Accessories	42

**I Kkwit™ ALWAYS CHANGING,**  
unveils its new superior quality indoor and outdoor  
urban furniture: GREEN!

Sanitary, design, anti-pollution, sustainable, efficient, innovative, practical and aesthetic.  
We install and deliver.

You will find other useful information, specifications and numerous photos  
on our website [www.ikkwit.com](http://www.ikkwit.com)

*Special thanks to our marvelous team.*

*Inventor of I Kkwit™ and Rack@BiKes™*

Direct line: 438 270-7676  
Email: [info@ikkwit.com](mailto:info@ikkwit.com)





**MBBM**



**CT**



**BBT**



**CT**



**B-6**



**BBM**



**PBC-x & CT**



**CT**



**CT**



**PBM-T & CM**



**TPN**

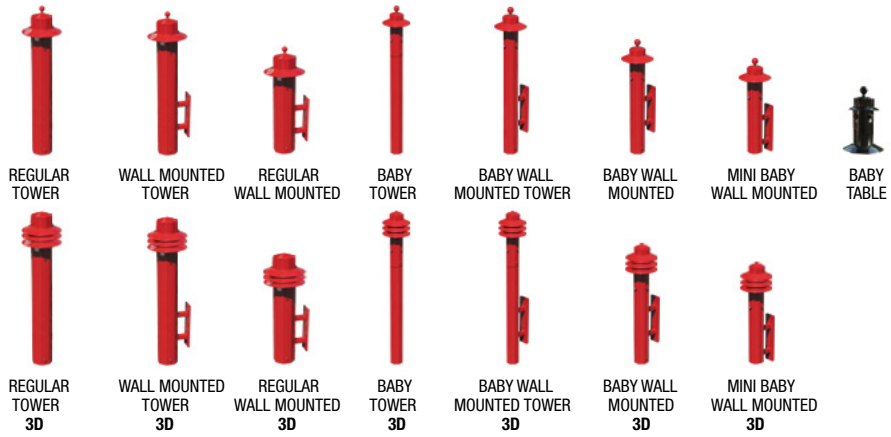


**TPN**



**TRBB - TRBH**

# EXTERIOR ASHTRAYS



# EXTERIOR ASHTRAYS

ITEM NO.  
CT



## I Kkwit™ REGULAR TOWER MODEL CT

<b>Height</b>	53 inches (135 cm)
<b>Ashtray diameter</b>	6 inches (15 cm)
<b>Cover</b>	12 inches (30 cm)
<b>Ancor Base</b>	Antitheft, steel /powder coated paint or galvanised. Bolted from the inside to the concrete. 3 wedge anchor points of 4 in. x 1/2 in. (10 cm x 1.3 cm)
<b>Interior receptacle</b>	5.5 in. x 32 in. (14 cm x 82 cm) Padlocked 12.6 litres (3.15 gallons)
<b>Weight</b>	15.2 kg (33.6 lbs.)
<b>Material</b>	100% Aluminium

ITEM NO.  
CM



## I Kkwit™ REGULAR WALL-MOUNTED CM

<b>Height</b>	32 inches (81 cm)
<b>Ashtray diameter</b>	6 inches (15 cm)
<b>Cover</b>	12 inches (30 cm)
<b>Ancor Base</b>	Affixed to the wall by means of a welded bracket. Different models available to fit customer's needs. 4 wedge anchors of 4 po. x 1/2 po. (10 cm x 1.3 cm)
<b>Interior receptacle</b>	5.5 in. x 15.5 in. (14 cm x 40 cm) Padlocked 6.15 litres (1.54 gallons)
<b>Weight</b>	9.1 kg (20 lbs.)
<b>Material</b>	100% Aluminium

ITEM NO.  
BBM



## I Kkwit™ BABY WALL-MOUNTED BBM

<b>Height</b>	30 inches (76 cm)
<b>Ashtray diameter</b>	4 inches (10 cm)
<b>Cover</b>	8 inches (20 cm)
<b>Ancor Base</b>	Affixed to the wall by means of a welded bracket. Different models available. 4 wedge anchors of 4 in. X 3/8 in. (10 cm X 1 cm)
<b>Interior receptacle</b>	3.25 in. x 17.5 in. (8 cm x 44 cm) Padlocked 2 litres (0.5 gallon)
<b>Weight</b>	5.3 kg (11.6 lbs.)
<b>Material</b>	100% Aluminium

ITEM NO.  
MBBM



## I Kkwit™ MINI BABY WALL-MOUNTED MBBM

<b>Height</b>	20 inches (51 cm)
<b>Ashtray diameter</b>	4 inches (10 cm)
<b>Cover</b>	8 inches (20 cm)
<b>Ancor Base</b>	Affixed to the wall by means of a welded bracket. Different models available. 4 wedge anchors of 4 in. X 3/8 in. (10 cm X 1 cm)
<b>Interior receptacle</b>	3.25 in. x 9 in. (8 cm x 23 cm) Padlocked 1.15 litres (0.3 gallon)
<b>Weight</b>	3.8 kg (8.6 lbs.)
<b>Material</b>	100% Aluminium

ITEM NO.  
CTM



## I Kkwit™ REG. WALL-MOUNTED TOWER CTM

<b>Height</b>	49 inches (125 cm)
<b>Ashtray diameter</b>	6 inches (15 cm)
<b>Cover</b>	12 inches (30 cm)
<b>Ancor Base</b>	Antitheft, Affixed to the wall by means of a welded bracket. Different models available to fit customer's needs. 4 wedge anchors of 4 po. x 1/2 po. (10 cm x 1.3 cm)
<b>Interior receptacle</b>	5.5 in. x 32 in. (14 cm x 82 cm) Padlocked 12.6 litres (3.15 gallons)
<b>Weight</b>	13.7 kg (30.2 lbs.)
<b>Material</b>	100% Aluminium

ITEM NO.  
BBT



## I Kkwit™ BABY TOWER BBT

<b>Height</b>	51 inches (130 cm)
<b>Ashtray diameter</b>	4 inches (10 cm)
<b>Cover</b>	8 inches (20 cm)
<b>Ancor Base</b>	Antitheft, steel powder coated paint or galvanised. Bolted from the inside. 2 wedge anchors of 4 po. x 1/2 po. (10 cm x 1.3 cm)
<b>Interior receptacle</b>	3.25 in. x 32 in. (8 cm x 82 cm) Padlocked 4.12 litres (1.03 gallons)
<b>Weight</b>	8.3 kg (18.2 lbs.)
<b>Material</b>	100% Aluminium

ITEM NO.  
BBTM



## I Kkwit™ BABY WALL-MOUNTED TOWER BBTM

<b>Height</b>	47 inches (119 cm)
<b>Ashtray diameter</b>	4 inches (10 cm)
<b>Cover</b>	8 inches (20 cm)
<b>Ancor Base</b>	Antitheft, Affixed to the wall by means of a welded bracket. Different models available. 4 wedge anchors of 4 in. X 3/8 in. (10 cm X 1 cm)
<b>Interior receptacle</b>	3.25 in. x 32 in. (8 cm x 82 cm) Padlocked 4.12 litres (1.03 gallons)
<b>Weight</b>	7.9 kg (17.4 lbs.)
<b>Material</b>	100% Aluminium

ITEM NO.  
MT



## I Kkwit™ BABY TABLE MT

<b>Height</b>	11 inches (28 cm)
<b>Ashtray diameter</b>	4 inches (10 cm)
<b>Cover</b>	8 inches (20 cm)
<b>Ancor Base</b>	Table model. May also be fixed permanently
<b>Interior receptacle</b>	3.25 in. x 4 in. (8 cm x 10 cm) 0.5 litre (0.12 gallon)
<b>Weight</b>	1.5 kg (3.2 lbs.)
<b>Material</b>	100% Aluminium

# EXTERIOR ASHTRAYS

ITEM NO.  
CT-3D



## I Kkwit™ REGULAR TOWER MODEL CT-3D

<b>Height</b>	53 inches (135 cm)
<b>Ashtray diameter</b>	6 inches (15 cm)
<b>Cover (3)</b>	3 x 12 inches (30 cm) Without Ball
<b>Anchor Base</b>	Antitheft, steel /powder coated paint or galvanised. Bolted from the inside to the concrete. 3 wedge anchor points of 4 in. X 1/2 in. (10 cm X 1.3 cm)
<b>Interior receptacle</b>	5.5 in. x 32 in. (14 cm x 82 cm) Padlocked 12.6 litres (3.15 gallons)
<b>Weight</b>	15.2 kg (33.6 lbs.)
<b>Material</b>	100% Aluminium



## I Kkwit™ REG. WALL-MOUNTED TOWER CTM-3D

<b>Height</b>	49 inches (125 cm)
<b>Ashtray diameter</b>	6 inches (15 cm)
<b>Cover (3)</b>	3 x 12 inches (30 cm) Without Ball
<b>Anchor Base</b>	Antitheft, Affixed to the wall by means of a welded bracket. Different models available to fit customer's needs. 4 wedge anchors of 4 in. X 1/2 in. (10 cm X 1.3 cm)
<b>Interior receptacle</b>	5.5 in. x 32 in. (14 cm x 82 cm) Padlocked 12.6 litres (3.15 gallons)
<b>Weight</b>	13.7 kg (30.2 lbs.)
<b>Material</b>	100% Aluminium

ITEM NO.  
CTM-3D

ITEM NO.  
CM-3D



## I Kkwit™ REGULAR WALL-MOUNTED CM-3D

<b>Height</b>	32 inches (81 cm)
<b>Ashtray diameter</b>	6 inches (15 cm)
<b>Cover (3)</b>	3 x 12 inches (30 cm) Without Ball
<b>Anchor Base</b>	Affixed to the wall by means of a welded bracket. Different models available to fit customer's needs. 4 wedge anchors of 4 po. X 1/2 in. (10 cm X 1.3 cm)
<b>Interior receptacle</b>	5.5 in. x 15.5 in. (14 cm x 40 cm) Padlocked 6.15 litres (1.54 gallons)
<b>Weight</b>	9.1 kg (20 lbs.)
<b>Material</b>	100% Aluminium



## I Kkwit™ BABY TOWER BBT-3D

<b>Height</b>	51 inches (130 cm)
<b>Ashtray diameter</b>	4 inches (10 cm)
<b>Cover (3)</b>	3 x 8 inches (20 cm) Without Ball
<b>Anchor Base</b>	Antitheft, steel powder coated paint or galvanised. Bolted from the inside. 2 wedge anchors of 4 in. X 1/2 in. (10 cm X 1.3 cm)
<b>Interior receptacle</b>	3.25 in. x 32 in. (8 cm x 82 cm) Padlocked 4.12 litres (1.03 gallons)
<b>Weight</b>	8.3 kg (18.2 lbs.)
<b>Material</b>	100% Aluminium

ITEM NO.  
BBT-3D

ITEM NO.  
BBM-3D



## I Kkwit™ BABY WALL-MOUNTED BBM-3D

<b>Height</b>	30 inches (76 cm)
<b>Ashtray diameter</b>	4 inches (10 cm)
<b>Cover (3)</b>	3 x 8 inches (20 cm) Without Ball
<b>Anchor Base</b>	Affixed to the wall by means of a welded bracket. Different models available. 4 wedge anchors of 4 in. x 3/8 in. (10 cm x 1 cm)
<b>Interior receptacle</b>	3.25 in. x 17.5 in. (8 cm x 44 cm) Padlocked 2 litres (0.5 gallons)
<b>Weight</b>	5.3 kg (11.6 lbs.)
<b>Material</b>	100% Aluminium



## I Kkwit™ BABY WALL-MOUNTED TOWER BBTM-3D

<b>Height</b>	47 inches (119 cm)
<b>Ashtray diameter</b>	4 inches (10 cm)
<b>Cover (3)</b>	3 x 8 inches (20 cm) Without Ball
<b>Anchor Base</b>	Antitheft, affixed to the wall by means of a welded bracket. Different models available. 4 wedge anchors of 4 in. x 3/8 in. (10 cm x 1 cm)
<b>Interior receptacle</b>	3.25 in. x 32 in. (8 cm x 82 cm) Padlocked 4.12 litres (1.03 gallons)
<b>Weight</b>	7.9 kg (17.4 lbs.)
<b>Material</b>	100% Aluminium

ITEM NO.  
BBTM-3D

ITEM NO.  
MBBM-3D



## I Kkwit™ MINI BABY WALL-MOUNTED MBBM-3D

<b>Height</b>	20 inches (51 cm)
<b>Ashtray diameter</b>	4 inches (10 cm)
<b>Cover (3)</b>	3 x 8 inches (20 cm) Without Ball
<b>Anchor Base</b>	Affixed to the wall by means of a welded bracket. Different models available. 4 wedge anchors of 4 in. x 3/8 in. (10 cm x 1 cm)
<b>Interior receptacle</b>	3.25 in. x 9 in. (8 cm x 23 cm) Padlocked 1.5 litres (0.3 gallons)
<b>Weight</b>	3.8 kg (8.6 lbs.)
<b>Material</b>	100% Aluminium



# CENDRIERS URBAINS | KKWIT™

## | KKWIT™ URBAN ASHTRAYS

No. Modèle Model No	Nom du modèle Model name	Grandeur Size	Quantité Quantity	Prix Price
CT	Tour régulière   Kkwit™ Regular Tower	53" x 6"	1	549.00 \$
			25	539.00 \$
			50	529.00 \$
			100	509.00 \$
CM	Mural régulier   Kkwit™ Regular Wall model	32" x 6"	1	499.00 \$
			25	489.00 \$
			50	479.00 \$
			100	459.00 \$
CTM	MODÈLE SPÉCIAL -- SPECIAL MODEL Tour Murale   Kkwit™ Wall Tower	49" x 6"	1	599.00 \$
			25	589.00 \$
			50	579.00 \$
			100	559.00 \$
BBT	Tour Baby   Kkwit™ Tower	51" x 4"	1	499.00 \$
			25	489.00 \$
			50	479.00 \$
			100	459.00 \$
BBM	Mural Baby   Kkwit™ Wall model	30" x 4"	1	449.00 \$
			25	439.00 \$
			50	429.00 \$
			100	409.00 \$
MBBM	Mural Mini Baby   Kkwit™ Wall model	20" x 4"	1	429.00 \$
			25	419.00 \$
			50	409.00 \$
			100	389.00 \$
BBTM	MODÈLE SPÉCIAL -- SPECIAL MODEL Tour Murale Baby   Kkwit™ Baby Wall Tower	47" x 4"	1	549.00 \$
			25	539.00 \$
			50	529.00 \$
			100	509.00 \$
MT	Modèle de table*   Kkwit™ Table model*	11" x 4"	1	249.00 \$
			25	239.00 \$
			50	229.00 \$
			100	209.00 \$

**Avec installation :** (brique ou béton) 89.00\$ plus 0.89\$ du km.

**Sans installation :** plus transport et frais d'emballage. Prix incluant la quincaillerie complète nécessaire à l'installation, cadenas, brosse de nettoyage. Couleur métallique: ajouter 25.00\$. Couleurs non standards peuvent être en extra. Tous changements à la conception normale de I Kkwit™ peuvent occasionner des extras. Payable 100% à la commande. « MODÈLE 3D AJOUTER 125.00\$ ». \*Pas de frais d'installation; transport seulement. Liste de prix sujet à changements sans préavis.

**With installation:** (brick or concrete) 89.00\$ plus 0.89\$ per km.

**Without installation:** plus freight and packaging. Prices include a complete installation kit (padlock, bolts, nuts, washers, screws and a cleaning brush). Metallic colour: add 25.00\$. Additional costs may be charged for some non-standard colours as well as for any changes of the regular I Kkwit™ concept. Payable 100% at the order from everyone. « 3D MODEL ADD 125.00\$ ». \* No installation fees; transport only. Prices are subject to changes, without prior notice.

# GARBAGE AND RECYCLE BINS



GARBAGE BIN WITH & WITHOUT HEAD

RECYCLE BIN WITH & WITHOUT HEAD

GARBAGE & RECYCLE BIN WITH & WITHOUT HEAD

HALF MOON WALL GARBAGE BIN WITH & WITHOUT HEAD

HALF MOON WALL RECYCLE BIN WITH & WITHOUT HEAD

HALF MOON RECYCLE BIN FOR BATTERIES

Toutes les poubelles et bacs à recyclage ronds sont disponibles à 3 voies (3 compartiments internes).  
 All garbage-recycle bins are available in 3 ways version. (3 liners inside)

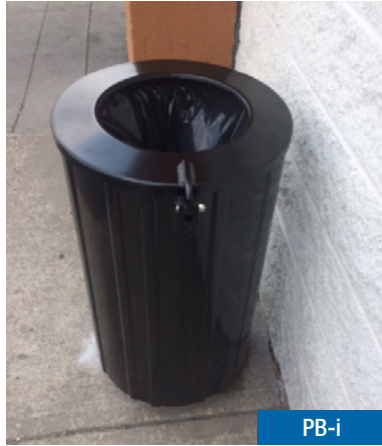


BRC-X + PBC-X



WITH FLAP COVER

PBC-X



PB-i



PBC-X



PBM-T



PBM-T



BR-i-3



BR-i-3



BRM + PBM



BR-i



PBC-X



PBM-T

ITEM NO.  
**PBC-x**  
**PBC-i**



**I Kkwit™ GARBAGE BIN WITH HEAD & ANCHOR BASE: PBC-x / FLAT BASE: PBC-i**

<b>Height</b>	56.5 in. (143 cm) / 53.5 in. (136 cm)
<b>Diameter</b>	18.5 inches (47 cm)
<b>Cover</b>	18.5 inches (47 cm)
<b>Anchor Base</b>	<b>PBC-x:</b> 3 in. Raised base (8 cm) for exterior. Antitheft (possible), powder coated. Inside anchors bolted to concrete with 4 anchors of 4 in. X 3/8 in. (10 cm X 1 cm) <b>PBC-i:</b> Flat base for interior
<b>Interior bin capacity and dimension</b>	89 litres (23.5 gallons) 28.5 in. x 15.25 in. (72 cm x 39 cm) Made of galvanized steel
<b>Weight</b>	21.2 kg (47 lbs.)
<b>Material</b>	100% Aluminium

ITEM NO.  
**BRC-x**  
**BRC-i**



**I Kkwit™ RECYCLE BIN WITH HEAD & ANCHOR BASE: BRC-x / FLAT BASE: BRC-i**

<b>Height</b>	56.5 in. (143 cm) / 53.5 in. (136 cm)
<b>Diameter</b>	18.5 inches (47 cm)
<b>Cover</b>	18.5 inches (47 cm)
<b>Anchor Base</b>	<b>BRC-x:</b> 3 in. Raised base (8 cm) for exterior. Antitheft (possible), powder coated. Inside anchors bolted to concrete with 4 anchors of 4 in. X 3/8 in. (10 cm X 1 cm) <b>BRC-i:</b> Flat base for interior
<b>Interior bin capacity and dimension</b>	89 litres (23.5 gallons) 28.5 in. x 15.25 in. (72 cm x 39 cm) Made of galvanized steel
<b>Weight</b>	21.2 kg (47 lbs.)
<b>Material</b>	100% Aluminium

ITEM NO.  
**PBRC-x**  
**PBRC-i**



**I Kkwit™ GARBAGE AND RECYCLE BIN WITH HEAD & ANCHOR BASE: PBRC-x / FLAT BASE: PBRC-i**

<b>Height</b>	56.5 in. (143 cm) / 53.5 in. (136 cm)
<b>Diameter</b>	18.5 inches (47 cm)
<b>Cover</b>	18.5 inches (47 cm)
<b>Anchor Base</b>	<b>PBRC-x:</b> 3 in. Raised base (8 cm) for exterior. Antitheft (possible), powder coated. Inside anchors bolted to concrete with 4 anchors of 4 in. X 3/8 in. (10 cm X 1 cm) <b>PBRC-i:</b> Flat base for interior
<b>Interior bin capacity and dimension</b>	<b>2 half moon bins</b> of 45 litres (12 gallons) 28.5 in. x 7.5 in. (72 cm x 19 cm) Made of galvanized steel
<b>Weight</b>	24.5 kg (54 lbs.)
<b>Material</b>	100% Aluminium

ITEM NO.  
**PBM-t**  
**PBM**



**I Kkwit™ HALF MOON WALL MODEL GARBAGE BIN WITH HEAD: PBM-t / WITHOUT HEAD: PBM**

<b>Height</b>	52 inches (132 cm) / 30 in. (76 cm)
<b>Diameter</b>	18.5 inches (47 cm)
<b>Cover</b>	<b>PBM-t</b> Rain cover 18.5 in. (47 cm) <b>PBM</b> Trim ring without rain cover
<b>Anchor Base</b>	Fixed to the wall with 4 button head screws and sleeves of 3 in. x 3/8 in. (10 cm X 1 cm). Antitheft (possible). Powder coated.
<b>Interior bin capacity and dimension</b>	<b>Half moon bin</b> of 45 litres (12 gallons) 28.5 in. x 7.5 in. (72 cm x 19 cm) Made of galvanized steel
<b>Weight</b>	13.5 kg (30 lbs.)
<b>Material</b>	100% Aluminium

**I Kkwit™ GARBAGE BIN WITHOUT HEAD & ANCHOR BASE: PB-x / FLAT BASE: PB-i**



<b>Height</b>	33 in. (84 cm) / 30 in. (76 cm)
<b>Diameter</b>	18.5 inches (47 cm)
<b>Cover</b>	Trim ring without rain cover
<b>Anchor Base</b>	<b>PB-x:</b> 3 in. Raised base (8 cm) for exterior. Antitheft (possible), powder coated. Inside anchors bolted to concrete with 4 anchors of 4 in. X 3/8 in. (10 cm X 1 cm) <b>PB-i:</b> Flat base for interior
<b>Interior bin capacity and dimension</b>	89 litres (23.5 gallons) 28.5 in. x 15.25 in. (72 cm x 39 cm) Made of galvanized steel
<b>Weight</b>	17.2 kg (38 lbs.)
<b>Material</b>	100% Aluminium

ITEM NO.  
**PB-x**  
**PB-i**



**I Kkwit™ RECYCLE BIN WITHOUT HEAD & ANCHOR BASE: BR-x / FLAT BASE: BR-i**

<b>Height</b>	33 in. (84 cm) / 30 in. (76 cm)
<b>Diameter</b>	18.5 inches (47 cm)
<b>Cover</b>	Trim ring without rain cover
<b>Anchor Base</b>	<b>BR-x:</b> 3 in. Raised base (8 cm) for exterior. Antitheft (possible), powder coated. Inside anchors bolted to concrete with 4 anchors of 4 in. X 3/8 in. (10 cm X 1 cm) <b>BR-i:</b> Flat base for interior
<b>Interior bin capacity and dimension</b>	89 litres (23.5 gallons) 28.5 in. x 15.25 in. (72 cm x 39 cm) Made of galvanized steel
<b>Weight</b>	20.4 kg (45 lbs.)
<b>Material</b>	100% Aluminium

ITEM NO.  
**BR-x**  
**BR-i**



**I Kkwit™ GARBAGE AND RECYCLE BIN WITHOUT HEAD & ANCHOR BASE: PBR-x / FLAT BASE: PBR-i**

<b>Height</b>	33 in. (84 cm) / 30 in. (76 cm)
<b>Diameter</b>	18.5 inches (47 cm)
<b>Cover</b>	Trim ring without rain cover
<b>Anchor Base</b>	<b>PBR-x:</b> 3 in. Raised base (8 cm) for exterior. Antitheft (possible), powder coated. Inside anchors bolted to concrete with 4 anchors of 4 in. X 3/8 in. (10 cm X 1 cm) <b>PBR-i:</b> Flat base for interior
<b>Interior bin capacity and dimension</b>	<b>2 half moon bins</b> of 45 litres (12 gallons) 28.5 in. x 7.5 in. (72 cm x 19 cm) Made of galvanized steel
<b>Weight</b>	20.4 kg (45 lbs.)
<b>Material</b>	100% Aluminium

ITEM NO.  
**PBR-x**  
**PBR-i**



**I Kkwit™ HALF MOON WALL MODEL RECYCLE BIN WITH HEAD BRM-t / BRM-T-P for batteries WITHOUT HEAD BRM / BRM-P for batteries**

<b>Height</b>	52 inches (132 cm) / 30 in. (76 cm)
<b>Diameter</b>	18.5 inches (47 cm)
<b>Cover</b>	<b>BRM-t</b> : Rain cover 18.5 in. (47 cm) <b>BRM-T-P</b> (for batteries) : Trim ring without rain cover (for batteries)
<b>Anchor Base</b>	Fixed to the wall with 4 button head screws and sleeves of 3 in. x 3/8 in. (10 cm x 1 cm) Antitheft (possible) and powder coated
<b>Interior bin capacity and dimension</b>	<b>Half moon bin</b> of 45 litres (12 gallons) 28.5 in. x 7.5 in. (72 cm x 19 cm) Made of galvanized steel
<b>Weight</b>	13.5 kg (30 lbs.)
<b>Material</b>	100% Aluminium

ITEM NO.  
**BRM-t**  
**BRM**  
**BRM-T-P**  
**BRM-P**

# POUBELLES ET BACS À RECYCLAGE | KKWIT™

## I KKWIT™ GARBAGE AND RECYCLE BINS

No. Modèle Model No	Nom du modèle Model name	Capacité Capacity	Quantité Quantity	Prix Price
PBM-T	<b>I Kkwit™</b> Demi poubelle murale avec tête Half moon wall model garbage bin with head	45 litres 12 gallons		∨ ∨ ∨
BRM-T	<b>I Kkwit™</b> Demi bac à recyclage mural avec tête Half moon wall model recycle bin with head	45 litres 12 gallons		∨ ∨ ∨
BRM-T-P	<b>I Kkwit™</b> Demi bac à recyclage mural avec tête POUR PILES Half moon wall model recycle bin with head FOR BATTERIES	45 litres 12 gallons		∨ ∨ ∨
PBR-x	<b>I Kkwit™</b> Poubelle et bac à recyclage sans tête, base à ancrer Garbage and recycle bin without head, anchor base	2x 45 litres 12 gallons		∨ ∨ ∨
PBR-i	<b>I Kkwit™</b> Poubelle et bac à recyclage sans tête, base plate Garbage and recycle bin without head, flat base	2x 45 litres 12 gallons	1	1299.00 \$
			25	1279.00 \$
			50	1259.00 \$
			100	1239.00 \$
PB-x	<b>I Kkwit™</b> Poubelle sans tête, base à ancrer Garbage bin without head, anchor base	89 litres 23.5 gallons		∨ ∨ ∨
PB-i	<b>I Kkwit™</b> Poubelle sans tête, base plate Garbage bin without head, flat base	89 litres 23.5 gallons		∨ ∨ ∨
BR-x	<b>I Kkwit™</b> Bac à recyclage sans tête, base à ancrer Recycle bin without head, anchor base	89 litres 23.5 gallons		∨ ∨ ∨
BR-i	<b>I Kkwit™</b> Bac à recyclage sans tête, base plate Recycle bin without head, flat base	89 litres 23.5 gallons	1	999.00 \$
			25	979.00 \$
			50	959.00 \$
			100	939.00 \$

NOTE : Toutes les poubelles et bacs à recyclage (ronds) sont aussi disponibles à trois compartiments. Ajouter 125.00\$.  
NOTE : All the garbage and recycle bins (round) are also available with three compartments. Add 125.00\$.

Avec installation : (sur béton) 99.00\$ plus 0.89\$ par km.

Sans installation : plus transport et frais d'emballage. Prix incluant la quincaillerie complète nécessaire à l'installation, cadenas. Couleur métallique: ajouter 55.00\$. Couleurs non standards peuvent être en extra. Tous changements à la conception normale de I Kkwit™ peuvent occasionner des extras. Payable 100% à la commande. Liste de prix sujet à changements sans préavis.

With installation: (on concrete) 99.00\$ plus 0.89\$ per km.

Without installation: plus freight and packaging. Prices include a complete installation kit (padlock, bolts, nuts, washers, screws). Metallic colour: add 55.00\$. Additional costs may be charged for some non-standard colours as well as for any changes of the regular I Kkwit™ concept. Payable 100% at the order from everyone. Prices are subject to changes, without prior notice.



Toutes les poubelles et bacs à recyclage ronds sont disponibles à 3 voies (3 compartiments internes).

All garbage-recycle bins are available in 3 ways version. (3 liners inside)

# POUBELLES ET BACS À RECYCLAGE | KKWIT™

## I KKWIT™ GARBAGE AND RECYCLE BINS

No. Modèle Model No	Nom du modèle Model name	Capacité Capacity	Quantité Quantity	Prix Price
PBC-x	<b>I Kkwit™</b> Poubelle avec tête, base à ancrer Garbage bin with head, anchor base	89 litres 23.5 gallons		∨ ∨ ∨
PBC-i	<b>I Kkwit™</b> Poubelle avec tête, base plate Garbage bin with head and flat base	89 litres 23.5 gallons		∨ ∨ ∨
BRC-x	<b>I Kkwit™</b> Bac à recyclage avec tête, base à ancrer Recycle bin with head, anchor base	89 litres 23.5 gallons		∨ ∨ ∨
BRC-i	<b>I Kkwit™</b> Bac à recyclage avec tête, base plate Recycle bin with head, flat base	89 litres 23.5 gallons	1	1 499.00 \$
			25	1 479.00 \$
			50	1 459.00 \$
			100	1 439.00 \$
PBRC-x	<b>I Kkwit™</b> Poubelle et bac à recyclage avec tête, base à ancrer Garbage and recycle bin with head, anchor base	2x 45 litres 12 gallons		∨ ∨ ∨
PBRC-i	<b>I Kkwit™</b> Poubelle et bac à recyclage avec tête, base plate Garbage and recycle bin with head, flat base	2x 45 litres 12 gallons	1	1 649.00 \$
			25	1 629.00 \$
			50	1 609.00 \$
			100	1 589.00 \$
PBM	<b>I Kkwit™</b> Demi poubelle murale sans tête Half moon wall model garbage bin without head	45 litres 12 gallons		∨ ∨ ∨
BRM	<b>I Kkwit™</b> Demi bac à recyclage mural sans tête Half moon wall model recycle bin without head	45 litres 12 gallons		∨ ∨ ∨
BRM-P	<b>I Kkwit™</b> Demi bac à recyclage mural sans tête POUR PILES Half moon wall model recycle bin without head FOR BATTERIES	45 litres 12 gallons	1	999.00 \$
			25	979.00 \$
			50	959.00 \$
			100	939.00 \$

NOTE : Toutes les poubelles et bacs à recyclage (ronds) sont aussi disponibles à trois compartiments. Ajouter 90.00\$.  
NOTE : All the garbage and recycle bins (round) are also available with three compartments. Add 90.00\$.

Avec installation : (sur béton) 99.00\$ plus 0.89\$ par km.

Sans installation : plus transport et frais d'emballage. Prix incluant la quincaillerie complète nécessaire à l'installation, cadenas. Couleur métallique: ajouter 25.00\$. Couleurs non standards peuvent être en extra. Tous changements à la conception normale de I Kkwit™ peuvent occasionner des extras. Payable 100% à la commande. Liste de prix sujet à changements sans préavis.

With installation: (on concrete) 99.00\$ plus 0.89\$ per km.

Without installation: plus freight and packaging. Prices include a complete installation kit (padlock, bolts, nuts, washers, screws). Metallic colour: add 25.00\$. Additional costs may be charged for some non-standard colours as well as for any changes of the regular I Kkwit™ concept. Payable 100% at the order from everyone. Prices are subject to changes, without prior notice.



Subvention de 70%  
pour les villes!\*

Subsidy of 70 %  
for the cities!\*

PBR-2-V



PBR-3-V

## PBR-2-V



## PBR-3-V



ITEM NO.  
PBR-2-V

I Kkwit™  
2 Ways  
Recycling Station  
PBR-2-V



<b>Size</b>	36 in. long x 24 in. deep (91 cm X 61 cm)
<b>Overall height</b>	48 in. (122 cm)
<b>Top</b>	Sloping or flat, as required by customer
<b>Anchor Base</b>	Bolted from the inside to the concrete, 4 wedge anchor points of 4 in. X 3/8 in. (10 cm x 1 cm), with possibility of ajustable legs.
<b>Capacity</b>	236 L (2x 118L in galvanized steel)
<b>Material</b>	100% Aluminium
<b>Weight</b>	100 lbs (45.4 kg)
<b>AVAILABLE OPTIONS</b>	Rubber flaps, Internal galvanized steel bins, Nylon legs under, internal bins, Embedded Lock, Bottom floor, Special stickers, Special paint, Sloping top**, Flat top**

ITEM NO.  
PBR-3-V

I Kkwit™  
3 Ways  
Recycling Station  
PBR-3-V



<b>Size</b>	48 in. long x 24 in. deep (122 cm X 61 cm)
<b>Overall height</b>	48 in. (122 cm)
<b>Top</b>	Peut avoir le desa Sloping or flat, as required by customer sus incliné ou droit selon le besoin du client
<b>Anchor Base</b>	Bolted from the inside to the concrete, 4 wedge anchor points of 4 in. X 3/8 in. (10 cm x 1 cm), with possibility of ajustable legs.
<b>Capacity</b>	354 L (3x 118L in galvanized steel)
<b>Material</b>	100% Aluminium
<b>Weight</b>	125 lbs (56.7 kg)
<b>AVAILABLE OPTIONS</b>	Rubber flaps, Internal galvanized steel bins, Nylon legs under, internal bins, Embedded Lock, Bottom floor, Special stickers, Special paint, Sloping top**, Flat top**

#### Options disponibles (Prix sur demande)

Clapets de caoutchouc, Bacs internes en acier galvanisé,  
Pattes de nylon pour bacs internes, Barrure encastree,  
Fond au sol, Lettrage special, Peinture speciale,  
Dessus incliné\*\*, Dessus plat\*\*

#### Available Options (Prices on request)

Rubber flaps, Internal galvanized steel bins  
Nylon legs under internal bins, Embedded Lock,  
Bottom floor, Special stickers, Special paint,  
Sloping top\*\*, Flat top\*\*

Subvention de 70%  
pour les villes!  
Subsidy of 70%  
for the cities!  
\*Informez-vous  
Inform yourself

## ÎLOT DE RÉCUPÉRATION I KKWIT™ I KKWIT™ RECYCLING STATION

No. Modèle Model No	Nom du modèle Model name	Quantité Quantity	Prix Price
PBR-2-V	I Kkwit™ Îlot de récupération 2 Voies / 2-Ways Recycling Station	1	2 599.00 \$
		25	2 559.00 \$
PBR-3-V	I Kkwit™ Îlot de récupération 3 Voies / 3-Ways Recycling Station	1	2 999.00 \$
		25	2 959.00 \$

Avec installation: (sur béton) 135.00\$ de l'unité plus 0.89\$ du km.

Sans installation: plus transport et frais d'emballage. Prix incluant la quincaillerie complète nécessaire à l'installation (boulons, écrous, rondelles, vis). Couleur métallique: ajouter 50.00\$. Couleurs non standards peuvent être en extra. Tous changements à la conception normale de I Kkwit™ peuvent occasionner des extras. Payable 100% à la commande. Liste de prix sujet à changements sans préavis.

\*Les options supplémentaires choisies par le client sont en sus. \*\*Pas de frais supplémentaires selon le dessus choisi, incliné ou plat. Prix sujets à changement sans préavis.

With installation: (on concrete) 135.00\$ per unit plus 0.89\$ per km.

Without installation: plus freight and packaging. Prices include a complete installation kit (bolts, nuts, washers, screws). Metallic colour: add 50.00\$. Additional costs may be charged for some non-standard colours as well as for any changes of the regular I Kkwit™ concept. Payable 100% at the order from everyone. Prices are subject to changes, without prior notice.

\* Additional options chosen by the customer are not included. \*\* No extra costs for the top of your choice, sloping or flat. Price may change without notice.

# BENCHES



BSAD-6



TPN-6



BSAD-6 + PBC-1



BSSD-6



TPN-6



BSSD-6



BSAD-6 + PBC-1

ITEM NO.  
BSAD-6

**I Kkwit™ BENCH WITH BACKREST (SINGLE)**  
**BSAD-6**



PARK BENCH

Overall Length	72.5 inches (184 cm)
Overall Width	30 inches (76 cm)
Overall Height	36 inches (92 cm)
Seat Height	18 inches (46 cm)
Anchor Base	Antitheft, steel/powder coated paint or galvanised. Bolted from the inside to the concrete. 4 wedge anchor points of 4 in. X 1/2 in. (10 cm X 1.3 cm)
Material	100% Aluminium
Weight	80 lbs. (36.4 kg)

ITEM NO.  
BSSD-6

**I Kkwit™ BENCH WITHOUT BACKREST (SINGLE)**  
**BSSD-6**



PARK BENCH

Overall Length	72.5 inches (184 cm)
Overall Width	18 inches (46 cm)
Overall Height	18 inches (46 cm)
Seat Height	18 inches (46 cm)
Anchor Base	Antitheft, steel/powder coated paint or galvanised. Bolted from the inside to the concrete. 4 wedge anchor points of 4 in. X 1/2 in. (10 cm X 1.3 cm)
Material	100% Aluminium
Weight	45 lbs. (20.5 kg)

ITEM NO.  
BDAD-6

**I Kkwit™ BENCH WITH BACKREST (DOUBLE)**  
**BDAD-6**



DOUBLE PARK BENCH

Overall Length	72.5 inches (184 cm)
Overall Width	60 inches (152 cm)
Overall Height	36 inches (92 cm)
Seat Height	18 inches (46 cm)
Anchor Base	Antitheft, steel/powder coated paint or galvanised. Bolted from the inside to the concrete. 8 wedge anchor points of 4 in. X 1/2 in. (10 cm X 1.3 cm)
Material	100% Aluminium
Weight	160 lbs. (72.8 kg)

ITEM NO.  
BDSO-6

**I Kkwit™ BENCH WITHOUT BACKREST (DOUBLE)**  
**BDSO-6**



PARK BENCH

Overall Length	72.5 inches (184 cm)
Overall Width	30 inches (76 cm)
Overall Height	18 inches (46 cm)
Seat Height	18 inches (46 cm)
Anchor Base	Antitheft, steel/powder coated paint or galvanised. Bolted from the inside to the concrete. 6 wedge anchor points of 4 in. X 1/2 in. (10 cm X 1.3 cm)
Material	100% Aluminium
Weight	70 lbs. (31.8 kg)

ITEM NO.  
TPN

**I Kkwit™ PIK-NIK TABLE**  
**TPN**



PICNIC TABLE

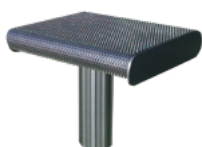
Overall Length	72.5 inches (184 cm)
Overall Width	66 inches (168 cm)
Overall Height	38 inches (97 cm)
Seat Height	18 inches (46 cm)
Anchor Base	Antitheft, steel/powder coated paint or galvanised. Bolted from the inside to the concrete. 14 wedge anchor points of 4 in. X 1/2 in. (10 cm X 1.3 cm)
Material	100% Aluminium
Weight	86 lbs. (39.1 kg) [Add 2 benches BSSD-6 : @ 45 lbs. = 90 lbs. (40.9 kg) Total weight: 176 lbs. (80 kg)]

ITEM NO.  
CAD  
CSD

**I Kkwit™ Aluminium CHAIR**



CAD



CSD

WITH BACKREST CAD		WITHOUT BACKREST CSD	
Overall Length	20 inches (51 cm)	Overall Length	20 inches (51 cm)
Overall Width	24 inches (61 cm)	Overall Width	18 inches (46 cm)
Overall Height	36 inches (92 cm)	Overall Height	18 inches (46 cm)
Seat Height	18 inches (46 cm)	Seat Height	18 inches (46 cm)
Anchor Base	Antitheft, steel/powder coated paint or galvanised. Bolted from the inside to the concrete. 2 wedge anchor points of 4 in. X 1/2 in. (10 cm X 1.3 cm)	Anchor Base	Antitheft, steel/powder coated paint or galvanised. Bolted from the inside to the concrete. 2 wedge anchor points of 4 in. X 1/2 in. (10 cm X 1.3 cm)
Material	100% Aluminium	Material	100% Aluminium
Weight	35 lbs. (16 kg)	Weight	25 lbs. (13 kg)

# BANCS, TABLES À PIQUE-NIQUE ET CHAISES | KKWIT™

## I KKWIT™ BENCHES, PICNIC TABLES AND CHAIRS

No. Modèle Model No	Nom du modèle Model name	Quantité Quantity	Prix Price
BSAD-6'	I Kkwit™ Banc simple avec dossier / Bench with backrest (single)	1	2 399.00 \$
		25	2 349.00 \$
BSSD-6'	I Kkwit™ Banc simple sans dossier / Bench without backrest (single)	1	1 799.00 \$
		25	1 749.00 \$
BDAD-6'	I Kkwit™ Banc double avec dossier / Bench with backrest (double)	1	4 699.00 \$
		25	4 659.00 \$
BDS D-6'	I Kkwit™ Banc double sans dossier / Bench without backrest (double)	1	2 299.00 \$
		25	2 279.00 \$
TPN	I Kkwit™ Table pique- nique / Picnic table	1	4 999 .00 \$
		25	4 959.00 \$
CAD	I Kkwit™ Chaise avec dossier / Chair with backrest	1	1 199.00 \$
		25	1 179.00 \$
CSD	I Kkwit™ Chaise sans dossier / Chair without backrest	1	799.00 \$
		25	779.00 \$

**Avec installation :** (sur béton) 135.00\$ de l'unité plus 0.89\$ du km.

**TPN seulement:** Installation 349.00\$ couleur métallique 155.00\$ (3 x 55.00\$)

**Sans installation :** plus transport et frais d'emballage. Prix incluant la quincaillerie complète nécessaire à l'installation (boulons, écrous, rondelles, vis). Couleur métallique: ajouter 55.00\$. Couleurs non standards peuvent être en extra. Tous changements à la conception normale de I Kkwit™ peuvent occasionner des extras. Payable 100% à la commande. \*Installation Chaise 125.00\$. Liste de prix sujet à changements sans préavis.

**With installation:** (on concrete) 135.00\$ per unit plus 0.89\$ per km.

**TPN Only:** Installation 349.00\$ metallic colours 155.00\$ (3 x 55.00\$)

**Without installation:** plus freight and packaging. Prices include a complete installation kit (bolts, nuts, washers, screws). Metallic colour: add 55.00\$. Additional costs may be charged for some non-standard colours as well as for any changes of the regular I Kkwit™ concept. Payable 100% from everyone. \*Installation Chair 125.00\$. Prices are subject to changes, without prior notice.



**NEW > NEW > NEW > NEW > NEW**

**I Kkwit™ ALWAYS CHANGING  
BISTRO AND TERRACE TABLES**



ITEM NO.  
TRBB

I Kkwit™  
ROUND  
LOW BISTRO  
TABLE  
TRBB



<b>Overall Width</b>	23 inches (58 cm)
<b>Overall Height</b>	30 inches (76 cm)
<b>Hidden base</b>	With or without hidden aluminium base
<b>Anchor Base</b>	Antitheft, steel/powder coated paint or galvanised. Bolted from the inside to the concrete. 4 wedge anchor points of 4 in. X 1/2 in. (10 cm X 1.3 cm)
<b>Material</b>	100% Aluminium
<b>Weight</b>	40 lbs (18.14 kg)

ITEM NO.  
TRBH

I Kkwit™  
ROUND  
HIGH BISTRO  
TABLE  
TRBH



<b>Overall Width</b>	23 inches (58 cm)
<b>Overall Height</b>	42 inches (107 cm)
<b>Hidden base</b>	With or without hidden aluminium base
<b>Anchor Base</b>	Antitheft, steel/powder coated paint or galvanised. Bolted from the inside to the concrete. 4 wedge anchor points of 4 in. X 1/2 in. (10 cm X 1.3 cm)
<b>Material</b>	100% Aluminium
<b>Weight</b>	40 lbs (18.14 kg)

ITEM NO.  
TCBB

I Kkwit™  
SQUARE  
LOW BISTRO  
TABLE  
TCBB



<b>Overall Width</b>	24 inches (61 cm)
<b>Overall Height</b>	30 inches (76 cm)
<b>Hidden base</b>	With or without hidden aluminium base
<b>Anchor Base</b>	Antitheft, steel/powder coated paint or galvanised. Bolted from the inside to the concrete. 4 wedge anchor points of 4 in. X 1/2 in. (10 cm X 1.3 cm)
<b>Material</b>	100% Aluminium
<b>Weight</b>	40 lbs. (18.14 kg)

ITEM NO.  
TCBH

I Kkwit™  
SQUARE  
HIGH BISTRO  
TABLE  
TCBH



<b>Overall Width</b>	24 inches 61 cm)
<b>Overall Height</b>	42 inches (107 cm)
<b>Hidden base</b>	With or without hidden aluminium base
<b>Anchor Base</b>	Antitheft, steel/powder coated paint or galvanised. Bolted from the inside to the concrete. 4 wedge anchor points of 4 in. X 1/2 in. (10 cm X 1.3 cm)
<b>Material</b>	100% Aluminium
<b>Weight</b>	40 lbs. (18.14 kg)

ITEM NO.  
TRT

I Kkwit™  
ROUND  
TERRACE  
TABLE  
TRT



<b>Overall Width</b>	40 inches (102 cm)
<b>Overall Height</b>	30 inches (76 cm)
<b>Hidden base</b>	With or without hidden aluminium base
<b>Anchor Base</b>	Antitheft, steel/powder coated paint or galvanised. Bolted from the inside to the concrete. 4 wedge anchor points of 4 in. X 1/2 in. (10 cm X 1.3 cm)
<b>Material</b>	100% Aluminium
<b>Weight</b>	80 lbs. (36.3 kg)

ITEM NO.  
TCT

I Kkwit™  
SQUARE  
TERRACE  
TABLE  
TCT



<b>Overall Width</b>	40 inches (102 cm)
<b>Overall Height</b>	30 inches (76 cm)
<b>Hidden base</b>	With or without hidden aluminium base
<b>Anchor Base</b>	Antitheft, steel/powder coated paint or galvanised. Bolted from the inside to the concrete. 4 wedge anchor points of 4 in. X 1/2 in. (10 cm X 1.3 cm)
<b>Material</b>	100% Aluminium
<b>Weight</b>	80 lbs. (36.3 kg)

# TABLES BISTRO | KKWIT™ BISTRO TABLES

No. Modèle Model No	Nom du modèle Model name	Quantité Quantity	Prix Price
TRBB	I Kkwit™ Table ronde BISTRO basse / Round Low BISTRO Table	1	1 149.00 \$
		25	1 129.00 \$
TRBH	I Kkwit™ Table ronde BISTRO haute / Round High BISTRO Table	1	1 249.00 \$
		25	1 229.00 \$
TCBB	I Kkwit™ Table carrée BISTRO basse / Square Low BISTRO Table	1	1 149.00 \$
		25	1 129.00 \$
TCBH	I Kkwit™ Table Carrée BISTRO Haute / Square High BISTRO Table	1	1 249.00 \$
		25	1 229.00 \$
TRT	I Kkwit™ Table ronde TERRASSE / Round Terrace Table	1	1 599.00 \$
		25	1 579.00 \$
TCT	I Kkwit™ Table Carrée TERRASSE / Square TERRACE Table	1	1 599.00 \$
		25	1 579.00 \$

**Avec installation :** (sur béton) 135.00\$ de l'unité plus 0.89\$ du km.

**Sans installation :** plus transport et frais d'emballage. Prix incluant la quincaillerie complète nécessaire à l'installation (boulons, écrous, rondelles, vis). Couleur métallique: ajouter 75.00\$. Couleurs non standards peuvent être en extra. Tous changements à la conception normale de I Kkwit™ peuvent occasionner des extras. Payable 100% à la commande. **Modèles TRT et TCT:** Base d'acier lourde spéciale (galvanisée et peinte), ajoutez 199.00\$. Liste de prix sujet à changements sans préavis.

**With installation:** (on concrete) 135.00\$ per unit plus 0.89\$ per km.

**Without installation:** plus freight and packaging. Prices include a complete installation kit (bolts, nuts, washers, screws). Metallic colour: add 75.00\$. Additional costs may be charged for some non-standard colours as well as for any changes of the regular I Kkwit™ concept. Payable 100% at the order from everyone. \*Installation Chair 89.00\$. Model TRT and TCT: Special heavy Steel base (galvanised and painted) add 199.00\$. Prices are subject to changes, without prior notice.

## BASES D'ANCRAGE

### TABLES BISTRO ( TRBB, TRBH, TCBB, TCBH)

3 Façons :

- Fixée Antivol, sur une base d'acier intérieure du poteau (identiques à nos cendriers) boulonnée au béton par 2 points d'ancrages de 4 po. X 1/2 po. (10 cm X 1.3 cm).  
S'installe Avec ou sans cache base d'aluminium.
- Fixée Antivol, sur une base d'acier intérieure soudée sur une plaque carrée EXTÉRIEURE du poteau boulonnée au béton par 4 points d'ancrages de 4 po. X 1/2 po. (10 cm X 1.3 cm).  
S'installe Avec ou sans cache base d'aluminium. (sans cache, les boulons sont visibles)
- Table déplaçable, patte soudée sur une base d'aluminium à remplir de sable pour lui donner du poids. Frais en sus. Prix sur demande.

### GRANDES TABLES (TRT et TCT)

3 Façons :

- Fixée Antivol, sur une base d'acier intérieure du poteau (identiques à nos cendriers) boulonnée au béton par 3 points d'ancrages de 4 po. X 1/2 po. (10 cm X 1.3 cm).  
S'installe Avec ou sans cache base d'aluminium.
- Fixée Antivol, sur une base d'acier intérieure soudée sur une plaque carrée EXTÉRIEURE du poteau boulonnée au béton par 4 points d'ancrages de 4 po. X 1/2 po. (10 cm X 1.3 cm).  
S'installe Avec ou sans cache base d'aluminium. (sans cache, les boulons sont visibles)
- Table déplaçable, patte soudée sur une base d'aluminium à remplir de sable pour lui donner du poids OU sur grande base d'acier peint ou galvanisée et peint pour lui donner du poids.  
Frais en sus. Prix sur demande.

## ANCHOR BASE

### BISTRO TABLES ( TRBB, TRBH, TCBB, TCBH)

3 Ways:

- Anti-theft, affixed on a steel base (identical to our ashtrays), bolted from the inside to the concrete: 2 wedge anchor points of 4 in. X 1/2 in. (10 cm X 1.3 cm).  
Installed with or without hidden aluminium base.
- Anti-theft, affixed on an interior steel base, welded on a square plate bolted from the OUTSIDE to the concrete: 4 wedge anchor points of 4 in. X 1/2 in. (10 cm X 1.3 cm).  
Installed with or without hidden aluminum base. (Without; the bolts are visible)
- Movable table, leg welded on an aluminum base to be filled with sand to give it weight. Extra fees. Price upon request.

### TERRACE TABLES (TRT and TCT)

3 Ways:

- Anti-theft, affixed on a steel base (identical to our ashtrays), bolted from the inside to the concrete: 3 wedge anchor points of 4 in. X 1/2 in. (10 cm X 1.3 cm).  
Installed with or without hidden aluminium base.
- Anti-theft, affixed on an interior steel base, welded on a square plate bolted from the OUTSIDE to the concrete: 4 wedge anchor points of 4 in. X 1/2 in. (10 cm X 1.3 cm).  
Installed with or without hidden aluminum base. (Without; the bolts are visible)
- Movable table, leg welded on an aluminum base to be filled with sand to give it weight OR on a large painted or galvanized steel base and painted to give it weight.  
Extra fees. Price upon request.

**NEW > NEW > NEW > NEW**

# KAKTUS TABLES



# TABLES KAKTUS

ITEM NO.  
TKB-2



<b>Overall Length</b>	Table top 26 in. (66 cm) 2 benches 14 in (35 cm)
<b>Overall Width</b>	52 inches (132 cm)
<b>Overall Height</b>	30 inches (76 cm)
<b>Seat Height</b>	20 inches (51 cm)
<b>Anchor base</b>	Antitheft with welded bolts if installed outside, (With lock nuts if installed inside) We use an internal steel base (twice the length of our ashtrays. The table is bolted with 8 bolts to base) which is welded on a round plate 3/8 "X 10" bolted to concrete anchors 4 in. 5. X 1/2 inch. (10 cm X 1.3 cm) Fits preferably without aluminum-based cache, but available when needed. To see the tables in pictures: Photos section, Tables: 153-181
<b>Material</b>	100% Aluminium
<b>Weight</b>	60 lbs. (27.21 kg)

ITEM NO.  
TKH-4



<b>Overall Length</b>	Table top 26 in. (66 cm) 2 benches 14 in (35 cm)
<b>Overall Width</b>	52 inches (132 cm)
<b>Overall Height</b>	42 inches (107 cm)
<b>Seat Height</b>	33 inches (84 cm)
<b>Anchor base</b>	Antitheft with welded bolts if installed outside, (With lock nuts if installed inside) We use an internal steel base (twice the length of our ashtrays. The table is bolted with 8 bolts to base) which is welded on a round plate 3/8 "X 10" bolted to concrete anchors 4 in. 5. X 1/2 inch. (10 cm X 1.3 cm) Fits preferably without aluminum-based cache, but available when needed. To see the tables in pictures: Photos section, Tables: 153-181
<b>Material</b>	100% Aluminium
<b>Weight</b>	70 lbs (31.75 kg)

## TABLES KAKTUS | KKWIT™ KAKTUS TABLES

No. Modèle Model No	Nom du modèle Model name	Largeur X hauteur Length x height	Quantité Quantity	Prix Price
TKB-2	Table KaKtus basse 2 places / KaKtus Low Table 2 places	52 X 30 po./in	1	1 799.00 \$
			25	1 779.00 \$
TKH-4	Table KaKtus haute 4 places / KaKtus High Table 4 places	52 X 42 po./in	1	1 999.00 \$
			25	1 979.00 \$

**Avec installation :** (sur béton) 135.00\$ de l'unité plus 0.89\$ du km. Modèles TKB et TKH: Pour installation à l'extérieur la base d'acier doit être galvanisée et peinte, ajoutez 149.00\$. \* Modèle TKH Possibilité d'ajouter un appui-pieds pour plus de confort; Fortement recommandé, ajoutez 239.00\$ Couleur métallique: ajoutez 75.00\$. Couleurs non standards peuvent être en extra. Tous changements à la conception normale de I Kkwit™ peuvent occasionner des extras. Payable 100% à la commande.

**Sans installation :** plus transport et frais d'emballage. Prix incluant la quincaillerie complète nécessaire à l'installation (boulons, écrous, rondelles, vis). Liste de prix sujet à changements sans préavis.

**With installation:** (on concrete) 135.00\$ per unit plus 0.89\$ per km. TKB and TKH Models: For outdoor installation the steel base must be galvanized and painted, add 149.00\$. Model TKH\* : Possibility to add a footrest for more comfort; Highly recommended, add 239.00\$ Metallic colour: add 75.00\$. Additional costs may be charged for some non-standard colours as well as for any changes of the regular I Kkwit™ concept. Payable 100% at the order from everyone.

**Without installation:** plus freight and packaging. Prices include a complete installation kit (bolts, nuts, washers, screws). Prices are subject to changes, without prior notice.

# BICYCLE RACKS (RacK@BiKes)



RV-1



RV-2



RV-4



RV-6



RV-8



RV-10



RV-12



Vert-i-Kal



RV-4



RV-4



RV-12



RV-6



RV-6



RV-12



RV-10



RV-4



Vert-i-Kal



I Kkwit™ RACK@BIKES  
RV-1 ANDRÉA

ITEM NO.  
RV-1

<b>Overall Length</b>	4 inches (10 cm) Only one pole with two hoops
<b>Length between poles</b>	4 inches (10 cm) Only one pole with two hoops
<b>Overall Width</b>	26 inches (66 cm)
<b>Overall Height</b>	46 inches (117 cm)
<b>Number of bicycles</b>	2 bicycles
<b>Anchor Base</b>	Antitheft, steel/powder coated paint or galvanised. Bolted from the inside to the concrete. 2 wedge anchor points of 2 in. X 1/2 in. (10 cm X 1.3 cm)
<b>Material</b>	100% Aluminium
<b>Weight</b>	17 lbs. (8 kg)



I Kkwit™ RACK@BIKES  
RV-2 ANDRÉA

ITEM NO.  
RV-2

<b>Overall Length</b>	32 inches (81 cm)
<b>Length between poles</b>	24 inches (61 cm)
<b>Overall Width</b>	23 inches (58 cm)
<b>Overall Height</b>	46 inches (117 cm)
<b>Number of bicycles</b>	3 bicycles
<b>Anchor Base</b>	Antitheft, steel/powder coated paint or galvanised. Bolted from the inside to the concrete. 4 wedge anchor points of 4 in. X 1/2 in. (10 cm X 1.3 cm)
<b>Material</b>	100% Aluminium
<b>Weight</b>	46 lbs. (21 kg)



I Kkwit™ RACK@BIKES  
RV-4 ANDRÉA

ITEM NO.  
RV-4

<b>Overall Length</b>	56 inches (142 cm)
<b>Length between poles</b>	48 inches (122 cm)
<b>Overall Width</b>	23 inches (58 cm)
<b>Overall Height</b>	46 inches (117 cm)
<b>Number of bicycles</b>	6 bicycles
<b>Anchor Base</b>	Antitheft, steel/powder coated paint or galvanised. Bolted from the inside to the concrete. 4 wedge anchor points of 4 in. X 1/2 in. (10 cm X 1.3 cm)
<b>Material</b>	100% Aluminium
<b>Weight</b>	66 lbs. (30 kg)



I Kkwit™ RACK@BIKES  
RV-6 ANDRÉA

ITEM NO.  
RV-6

<b>Overall Length</b>	80 inches (203 cm)
<b>Length between poles</b>	72 inches (183 cm)
<b>Overall Width</b>	23 inches (58 cm)
<b>Overall Height</b>	46 inches (117 cm)
<b>Number of bicycles</b>	10 bicycles
<b>Anchor Base</b>	Antitheft, steel/powder coated paint or galvanised. Bolted from the inside to the concrete. 4 wedge anchor points of 4 in. X 1/2 in. (10 cm X 1.3 cm)
<b>Material</b>	100% Aluminium
<b>Weight</b>	85 lbs. (39 kg)



I Kkwit™ RACK@BIKES  
RV-8 ANDRÉA

ITEM NO.  
RV-8

<b>Overall Length</b>	104 inches (264 cm)
<b>Length between poles</b>	96 inches (244 cm)
<b>Overall Width</b>	23 inches (58 cm)
<b>Overall Height</b>	46 inches (117 cm)
<b>Number of bicycles</b>	14 bicycles
<b>Anchor Base</b>	Antitheft, steel/powder coated paint or galvanised. Bolted from the inside to the concrete. 4 wedge anchor points of 4 in. X 1/2 in. (10 cm X 1.3 cm)
<b>Material</b>	100% Aluminium
<b>Weight</b>	105 lbs. (47 kg)



I Kkwit™ RACK@BIKES  
RV-10 ANDRÉA

ITEM NO.  
RV-10

<b>Overall Length</b>	128 inches (325 cm)
<b>Length between poles</b>	120 inches (305 cm)
<b>Overall Width</b>	23 inches (58 cm)
<b>Overall Height</b>	46 inches (117 cm)
<b>Number of bicycles</b>	18 bicycles
<b>Anchor Base</b>	Antitheft, steel/powder coated paint or galvanised. Bolted from the inside to the concrete. 4 wedge anchor points of 4 in. X 1/2 in. (10 cm X 1.3 cm)
<b>Material</b>	100% Aluminium
<b>Weight</b>	124 lbs. (56 kg)



I Kkwit™ RACK@BIKES  
RV-12 ANDRÉA

ITEM NO.  
RV-12

<b>Overall Length</b>	156 inches (398 cm)
<b>Length between poles</b>	144 inches (366 cm)
<b>Overall Width</b>	23 inches (58 cm)
<b>Overall Height</b>	46 inches (117 cm)
<b>Number of bicycles</b>	20 bicycles
<b>Anchor Base</b>	Antitheft, steel/powder coated paint or galvanised. Bolted from the inside to the concrete. 6 wedge anchor points of 6 in. X 1/2 in. (10 cm X 1.3 cm)
<b>Material</b>	100% Aluminium
<b>Weight</b>	157 lbs. (71 kg)



I Kkwit™ RACK@BIKES  
Vert-i-Kal

ITEM NO.  
Vert-i-Kal

<b>Overall Length</b>	48 inches (122 cm)
<b>Length between poles</b>	80 inches (203 cm)
<b>Overall Width</b>	7 inches (18 cm)
<b>Overall Height</b>	70 inches (178 cm)
<b>Number of bicycles</b>	1 bicycle
<b>Anchor Base</b>	Antitheft, steel/powder coated paint or galvanised. Bolted from the inside to the concrete with 6 Tapcon screws of 3 in. X 1/8 in. (7.5 cm X 0.5 cm)
<b>Material</b>	100% Aluminium
<b>Weight</b>	10 lbs. (4.54 kg)

## VOICI QUELQUES ATTRIBUTS DE RACK@BIKES™ :

- Les guidons ne se touchent pas car le support à vélo est sur deux étages et évites ainsi de briser guidons, câbles et peinture.
- La roue et le cadre du vélo se cadentent facilement ce qui le rend antivol.
- Les vélos se tiennent debout tout seul. • Aucun stress causé aux roues.
- Les vélos avec paniers y entrent facilement.
- Modulaire, on peut mettre de 1 unité à un km de vélo si on veut !
- Étant en aluminium durable, il ne rouillera jamais.
- Comme tous les produits I Kkwit, il est disponible en 400 couleurs.
- Il s'harmonise avec tous les produits I Kkwit™.
- Disponible en version démontable\* l'hiver pour faciliter le déneigement. Seuls les poteaux restent en place.
- Il accueille facilement tous les genres et grandeurs de bicyclette.
- Son design surélevé empêche tout amoncellement de débris à sa base.
- Son design unique au monde permet de mettre :
  - 2 vélos là où tous en mettent 1 (modèle RV-1)
  - 3-5 vélos là où tous en mettent 2 (modèle RV-2)
  - 6-8 vélos là où tous en mettent 4 (modèle RV-4)
  - 10-12 vélos là où tous en mettent 6 (modèle RV-6)
  - 14-16 vélos là où tous en mettent 8 (modèle RV-8)
  - 18-20 vélos là où tous en mettent 10 (modèle RV-10)
  - 20-22 vélos là où tous en mettent 12 (modèle RV-12)
  - 28-30 vélos là où tous en mettent 16 (modèle RV-16)
  - 32-34 vélos là où tous en mettent 18 (modèle RV-18)
  - 36-38 vélos là où tous en mettent 20 (modèle RV-20)
  - 1 vélo debout sauve espace (modèle Vert-i-Kal)



**Donc 240 vélos dans  
120 pieds où tous en  
mettraient 120!**

\* Il est facile d'entretien autant pour le support que pour l'entretien du terrain. Puisqu'il est surélevé, sa conception et design unique permettent de mettre plus de vélos dans moins d'espace. De plus, si nous voulons, la partie qui retient les vélos peut-être amovible permettant ainsi le déneigement entre les deux poteaux. Il faut vraiment voir!

\*\* MODÈLE VERT-I-KAL : Support à bicyclettes mural pour les stationnements intérieurs, où les vélos sont debout! Il peut se mettre: Au mur en séries. Sur colonne simple et/ou plusieurs en séries sur la même colonne comme un sapin de Noël. Une pure extase du design, de la facilité incroyable d'y mettre les vélos, de l'efficacité et surtout il vous sauvera de l'espace!

## HERE ARE SOME ATTRIBUTES OF THE RACK@BIKES™:

- The handlebars do not touch because the bicycle rack is on two levels and avoid breaking handlebars, cables and paint.
- The wheel and bicycle frame lock easily which makes it antitheft.
- The bicycles are free standing. • No stressed wheels.
- The bicycles with baskets park easily.
- Modular: you can put one unit up to one kilometre of bicycle if you want!
- Made of durable aluminum, it will never rust.
- Like all I Kkwit products, it is available in 400 colours.
- It matches all the I Kkwit products.
- Available in a dismantable version\*, for easy snow removal in the winter. Only the poles remain in place.
- It easily accommodates all types and sizes of bicycles.
- Its elevated design prevents accumulation of debris at its base.
- Its unique design allows putting:
  - 2 bicycles where everyone puts 1 (model RV-1)
  - 3-5 bicycles where everyone puts 2 (model RV-2)
  - 6-8 bicycles where everyone puts 4 (model RV-4)
  - 10-12 bicycles where everyone puts 6 (model RV-6)
  - 14-16 bicycles where everyone puts 8 (model RV-8)
  - 18-20 bicycles where everyone puts 10 (model RV-10)
  - 20-22 bicycles where everyone puts 12 (model RV-12)
  - 28-30 bicycles where everyone puts 16 (model RV-16)
  - 32-34 bicycles where everyone puts 18 (model RV-18)
  - 36-38 bicycles where everyone puts 20 (model RV-20)
  - 1 free standing bicycle, space saver (model Vert-i-Kal)

**So 240 bicycles in 120  
feet where everyone  
would put 120!**

\* The support as well as the grounds is easy to maintain. Since it is raised, its concept and unique design allow for more bicycles in less space. Moreover, the part that holds the bicycles can be detachable, if we want, allowing for snow removal between the two poles. You should really see it!

\*\* Model Vert-i-Kal: Wall mounted bicycle rack for indoor parking, where the bicycles will be free standing! They can be put : in series on the wall, on a single column and/or many on the same column like a Christmas tree. A pure ecstasy of design, the ease-of use when parking the bicycles as well as its efficiency and above all it is a space saver!

# RACK@BIKES | KKWIT™ RACK@BIKES

No. Modèle Model No	Nombre de vélos Bikes capacity	Longueur Length	Prix Price
RV-1	2 vélos/bikes	1 pied/foot	459.00 \$
RV-2	3-5 vélos/bikes	2 pieds/feet	1 039.00 \$
RV-4	6-8 vélos/bikes	4 pieds/feet	1 759.00 \$
RV-6	10-12 vélos/bikes	6 pieds/feet	1 999.00 \$
RV-8	14-16 vélos/bikes	8 pieds/feet	2 599.00 \$
RV-10	18-20 vélos/bikes	10 pieds/feet	3 129.00 \$
RV-12	20-22 vélos/bikes	12 pieds/feet	3 799.00 \$
RV-16	28-30 vélos/bikes	16 pieds/feet	4 999.00 \$
RV-18	32-34 vélos/bikes	18 pieds/feet	5 549.00 \$
RV-20	36-38 vélos/bikes	20 pieds/feet	6 059.00 \$
Vert-i-Kal	1 vélo/bike	7 po./in x 80 po./in	499.00 \$

**Avec installation :** (Sur béton 2 poteaux) 150.00\$ plus 0.89\$ du km. RV-1(1 poteau) 89.00\$ plus 0.89\$ du km. Modèle à 3 poteaux 249.00\$.

**Sans installation :** plus transport et frais d'emballage. Prix incluant la quincaillerie complète nécessaire à l'installation. 250.00\$ par poteau supplémentaire pour support à vélo de 10 pieds et plus. Couleur métallique: ajouter 65.00\$ par section (25.00\$ RV-1 et Vert-i-kal). Couleurs non standards peuvent être en extra. Tous changements à la conception normale de I Kkwit™ peuvent occasionner des extras. Payable 100% à la commande. Liste de prix sujet à changements sans préavis.

**With installation:** (On concrete 2 poles) 150.00\$ plus 0.89\$ per km. RV-1 (1 pole) 89.00\$ plus 0.89\$ per km. Model with 3 poles 249.00\$.

**Without installation:** plus freight and packaging. Prices include a complete installation kit (bolts, nuts, washers, screws). 250.00\$ per additional pole for 10ft and more. Metallic colour: add 65.00\$ per section (25.00\$ RV-1 and Vert-i-kal). Additional costs may be charged for some non-standard colours as well as for any changes of the regular I Kkwit™ concept. Payable 100% at the order from everyone. Prices are subject to changes, without prior notice.



# BOLLARDS AND FENCE



**B-4**



**B-6**



**CLÔTURE  
FENCE**



B-4



B-4



B-4



B-4



B-4

**BOLLARD AMOVIBLE  
REMOVABLE BOLLARD**



ITEM NO.  
B-4



**I Kkwit™ BOLLARD B-4**

<b>Height with ball</b>	38 inches (97 cm)
<b>Diameter</b>	4 inches (10 cm)
<b>Anchor Base</b>	Antitheft, steel/powder coated paint or galvanised. Bolted from the inside at 15 inches (40 cm) height to a welded steel plate of 1/4 inch (0.75 cm). 5 wedge anchor points of 4 in. X 1/2 in. (10 cm X 1.3 cm)
<b>Material</b>	100% Aluminium
<b>Weight</b>	18 lbs (8.3 kg)



**I Kkwit™ Fence (made with Bollards B-4)**

<b>Height with ball</b>	38 inches (97 cm)
<b>Diameter</b>	4 inches (10 cm)
<b>Anchor Base</b>	Antitheft, steel/powder coated paint or galvanised. Bolted from the inside with 15 inches (40 cm) high of steel pole of 1/4 inch (0.75 cm). 2 wedge anchor points of 4 in. X 1/2 in. (10 cm X 1.3 cm)
<b>Material</b>	100% Aluminium
<b>Weight</b>	18 lbs (8.3 kg)

ITEM NO.  
B-6



**I Kkwit™ BOLLARD B-6**

<b>Height with ball</b>	38 inches (97 cm)
<b>Diameter</b>	6 inches (15 cm)
<b>Anchor Base</b>	Antitheft, steel/powder coated paint or galvanised. Bolted from the inside at 15 inches (40 cm) height to a welded steel plate of 1/4 inch (0.75 cm). 3 wedge anchor points of 4 in. X 1/2 in. (10 cm X 1.3 cm)
<b>Material</b>	100% Aluminium
<b>Weight</b>	33 lbs (15.2 kg)

## BOLLARDS ET CLÔTURE | KKWIT™ BOLLARDS & FENCE

No. Modèle Model No	Nom du modèle Model name	Diamètre Diameter	Prix Price
<b>B-4</b>	<b>Bollard 4 po./in X 3 pi/ft</b>	<b>4 po./in</b>	<b>399.00 \$</b>
<b>B-6</b>	<b>Bollard 6 po./in. X 3 pi/ft</b>	<b>6 po./in</b>	<b>449.00 \$</b>
<b>C-4</b>	<b>Clôture/Fence 4 po./in X 3 pi/ft</b>	<b>4 po./in</b>	prix sur demande price on request
<b>B-4-amo B-6-amo</b>	<b>Bollard 4-6 po./in X 3 pi/ft amovible/removable</b>	<b>4 po./in 6 po./in</b>	prix sur demande price on request

**Avec installation :** (brique ou béton) 89.00\$ plus 0.89\$ du km.

**Sans installation :** plus transport et frais d'emballage. Prix incluant la quincaillerie complète nécessaire à l'installation. Couleur métallique: ajouter 25.00\$. Couleurs non standards peuvent être en extra. Tous changements à la conception normale de I Kkwit™ peuvent occasionner des extras. Payable 100% à la commande. Liste de prix sujet à changements sans préavis.

**With installation:** (brick or concrete) 89.00\$ plus 0.89\$ per km.

**Without installation:** plus freight and packaging. Prices include a complete installation kit. Metallic colour: add 25.00\$. Additional costs may be charged for some non-standard colours as well as for any changes of the regular I Kkwit™ concept. Payable 100% at the order from everyone. Prices are subject to changes, without prior notice.



# Rack@Golf<sup>MC</sup><sub>TM</sub>

Introducing the all new I Kkwit<sup>TM</sup> stand for golf bags.



I Kkwit<sup>TM</sup> RACK@GOLF RG-6



I Kkwit<sup>TM</sup> RACK@GOLF RG-12





### I Kkwit™ RACK@GOLF RG-6

<b>Length on the ground</b>	4 inches (10 cm) Only one pole
<b>Overall length</b>	49 inches (125 cm)
<b>Overall width</b>	10.5 inches (27 cm)
<b>Overall height</b>	37 inches (94 cm)
<b>Number of golf bags</b>	Capacity of 6 Golf bags
<b>Anchor base</b>	Antitheft, steel/powder coated paint or galvanised. Bolted from the inside to the concrete. 2 wedge anchor points of 4 in. X 1/2 in. (10 cm X 1.3 cm)
<b>Material</b>	100% Aluminium
<b>Weight</b>	24 lbs. (11 kg)



### I Kkwit™ RACK@GOLF RG-12

<b>Length on the ground</b>	4 inches (10 cm) Two poles
<b>Overall length</b>	98 inches (250 cm)
<b>Overall width</b>	10.5 inches (27 cm)
<b>Overall height</b>	37 inches (94 cm)
<b>Number of golf bags</b>	Capacity of 12 Golf bags
<b>Anchor base</b>	Antitheft, steel/powder coated paint or galvanised. Bolted from the inside to the concrete. 4 wedge anchor points of 4 in. X 1/2 in. (10 cm X 1.3 cm)
<b>Material</b>	100% Aluminium
<b>Weight</b>	45 lbs. (22 kg)

## RACK@GOLF™ | IKKWIT™ RACK@GOLF™

No. Modèle Model No	Nom du modèle Model name	Prix Price
<b>RG-6</b>	<b>Capacité de 6 sacs de golf / Capacity of 6 Golf Bags</b>	<b>699.00 \$</b>
<b>RG-12</b>	<b>Capacité de 12 sacs de golf / Capacity of 12 Golf Bags</b>	<b>899.00 \$</b>

**Avec installation sur béton:** RG-6: 89.00\$ plus 0.89\$ du km, RG-12 : 149.00\$ plus 0.89\$ du km.

**Sans installation:** plus transport et frais d'emballage. Prix incluant la quincaillerie complète nécessaire à l'installation.

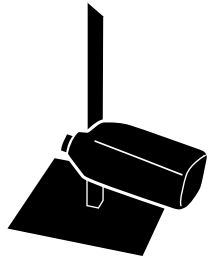
Couleur métallique: RG-6 ajouter 50.00\$; RG-12 ajouter 80.00\$. Couleurs non standards peuvent être en extra. Tous changements à la conception normale de I Kkwit™ peuvent occasionner des extras. Payable 100% à la commande. Liste de prix sujet à changements sans préavis.

**With installation on concrete:** RG-6: 89.00\$ plus 0.89\$ per km, RG-12: 149.00\$ plus 0.89\$ per km.

**Without installation:** plus freight and packaging. Prices include a complete installation kit.

Metallic colour: RG-6 add 50.00\$; RG-12 add 80.00\$. Additional costs may be charged for some non-standard colours as well as for any changes of the regular I Kkwit™ concept. Payable 100% at the order from everyone. Prices are subject to changes, without prior notice.

# WINSHIELD WASHER STACKER



## Rack@Wash<sup>MC TM</sup>

I Kkwit <sup>TM</sup> RACK@WASH RW	
<b>Length on the ground</b>	12 inches (30.5 cm)
<b>Overall length</b>	12 in. X 12 in. X 3/16 in. thick (30.5 cm X 30.5 cm X 0.5 cm thick)
<b>Overall width</b>	12 inches (30.5 cm)
<b>Overall height</b>	72 inches (183 cm)
<b>Number of containers</b>	Capacity of 17 empty containers
<b>Anchor base</b>	Antitheft, bolted from the inside to the concrete. 4 wedge anchor points of 2.5 in. X 3/8 in. (6.5 cm X 1 cm)
<b>Material</b>	100% Aluminium
<b>Weight</b>	3.6 lbs. (1.6 kg)



## RACK@WASH<sup>TM</sup> | KKWIT<sup>TM</sup> RACK@WASH<sup>TM</sup>

No. Modèle Model No	Nom du modèle Model name	Quantité Quantity	Prix Price
<b>RW</b>	<b>I Kkwit<sup>TM</sup></b> Support à bidon de lave-glace vide / Empty windshield washer stacker	1	249.00 \$
		25	229.00 \$

**Avec installation sur béton:** 89.00\$ plus 0.89\$ du km. Base de béton de 55 lbs amovible 59.00\$.

**Sans installation :** plus transport et frais d'emballage. Prix incluant la quincaillerie complète nécessaire à l'installation. Couleur métallique : ajouter 25.00\$. Couleurs non standards peuvent être en extra. Tous changements à la conception normale de I Kkwit<sup>TM</sup> peuvent occasionner des extras. Payable 100% à la commande. Liste de prix sujet à changements sans préavis.

**With installation on concrete:** 89.00\$ plus 0.89\$ per km. Removable 55 lbs concrete base 59.00\$.

**Without installation:** plus freight and packaging. Prices include a complete installation kit. Metallic colour: add 25.00\$. Additional costs may be charged for some non-standard colours as well as for any changes of the regular I Kkwit<sup>TM</sup> concept. Payable 100% at the order from everyone. Prices are subject to changes, without prior notice.

# BOÎTES À MENU ET/OU D’AFFICHAGE AU DEL I Kkwit™

*donnez du punch à votre entreprise !*



# I Kkwit™ LED MENU AND/OR MESSAGE BOXES

*give your business a punch!*

- Fabrication **SUR MESURE** en Aluminium
- Fenêtre en Lexan incassable
- Éclairage au DEL ultra voyant
- Disponible en plusieurs versions et **400 couleurs**
- Menu ou affiche protégé à l’intérieur
- Conception design, solide et attrayante
- Possibilité d’y insérer votre logo et/ou nom
- Prix compétitif et installation par notre équipe

- **CUSTOM MADE** in Aluminium
- Window made from unbreakable Lexan
- Ultra bright LED lighting
- Available in several models and **400 colours**
- Menu or message protected from the inside
- Design concept, solid and attractive
- Possibility to add your logo and / or name
- Competitive prices and installation by our crew

## BOÎTE D’AFFICHAGE/À MENU INFO/MENU BOX

No. Modèle Model No	Nom du modèle Model name	Prix Price
<b>BM</b>	<b>Boîte d’affichage/à menu éclairée au DEL LED illuminated info/menu box</b>	<b>sur demande Price on request</b>

**Avec installation:** BRANCHEMENT ÉLECTRIQUE (Le branchement électrique direct, (sans prise à 3 branches) doit être fait par un électricien autorisé.) Prix d’installation 150.00\$/unité plus 0.89\$ du km.

**Sans installation:** Plus transport et frais d’emballage. Prix incluant la quincaillerie complète nécessaire à l’installation (boulons, écrous, rondelles, vis). Couleur métallique : ajouter 75.00\$. Pour installation sur mesure, une attache spéciale est souvent nécessaire ; son prix est variable selon le modèle choisi. Couleurs non standards peuvent être en extra. Tous changements à la conception normale de I Kkwit™ peuvent occasionner des extras. Le prix varie pour chaque boîte car elles sont 100% sur mesure et toutes différentes. 100% Payable sur commande non remboursable si la boîte est dessinée et/ou découpée et/ou construite. Liste de prix sujet à changements sans préavis..

**With installation:** ELECTRICAL CONNECTION (The electrical direct connection (without 3 poles plug) must be done by an authorized electrician.) Installation price 150.00\$/each plus 0.89\$ per km.

**Without installation:** Plus, freight and packaging. Prices include a complete installation kit (bolts, nuts, washers, screws). Metallic color: add 75.00\$. For custom installation, a special fastener/bracket is often necessary; its price varies depending on the model chosen. Additional costs may be charged for some non-standard colors as well as for any changes of the regular I Kkwit™ concept. 100% Payable at the order and non-refundable if the box is drawn and/or cut and/or build. Prices are subject to changes, without prior notice.

FIL INCLUS. Montage facile. / PLUG-&-PLAY. Easy to assemble.





**PBM-T**



**PBC-x**



**B-4**



**Vert-i-Kal**



**BR-i-3**



**BR-i-3**



**RG-6**



**PBC-i/ BSAD-6**



**RV-12**

**Rack@ Bikes**



**Support à vélo / Bicycle rack RV-4**



**RV-4**



**RW**

**Rack@ Wash**

**iKkwit.com**  
CENDRIER ET MOBILIER URBAINS  
URBAN ASHTRAY AND FURNITURE

# PRODUITS SUR MESURE ET SUR DEMANDE CUSTOM PRODUCTS AND ON REQUEST



Base 300 lbs



Base 100 lbs

Base 55 lbs



Bases acier standard et pour pieux visés -  
Anchorage steel bases, regular and screw pile



Modifications sur mesure  
**CM** - Modifications  
upon demand



Vente et installation de tapis de caoutchouc -  
Rubber mat installation and sale



Placage en cuivre, chrome et Or -  
Gold, copper and chrome plating



Protège Bouton -  
Button Protector



**BBT** dans table -  
Through existing table



Infinité d'Ancre spéciaux  
**BBM** An infinity of special  
anchorage



Letrage spécial -  
Special advertising



Affichage - Signalisation



Grille de Sécurité - Security grid



Travaux d'aluminium et stainless -  
Checker plate work



Bas de porte acier inoxydable -  
Stainless steel door protector



APRÈS - AFTER

AVANT - BEFORE

Caillebotis - Grating

# PRODUITS SUR MESURE ET SUR DEMANDE CUSTOM PRODUCTS AND ON REQUEST



Affichage spécial -  
Custom sticker



Bac à cendre sur mesure -  
custom ashes container



Bac à cendre-  
ashes bucket



Bains d'oiseaux-  
Bird baths



Bases de bollards amovibles-  
Movable bollards bases



Bains d'oiseaux-Bird baths



Bancs de couleurs variées- 2 couleurs benches



Boîtes de tous genres-  
All style boxes.



Boîtes d'affichage-ou à menu-Dispaly or Menu boxes



Boîtes de tous genres-  
All style boxes.



Bollards amovibles-  
Movable bollards



Bollards en acier inox-  
Stainless steel bollards



Caillebotis su mesure- Custom grating.



Clôture en acier galvanisé-Galvanized fence



Coins de stainless de tout genre-  
Custom stainless corners

# PRODUITS SUR MESURE ET SUR DEMANDE CUSTOM PRODUCTS AND ON REQUEST



Distribution Lampes d'artisan-  
Artisan product distribution



Emballage spécialisé  
AVANT INSTALLATION-  
Specialized packaging  
BEFORE INSTALLATION



Emballage spécialisé-Specialized packaging



Emballage spécialisé-Specialized packaging



Emballage spécialisé-Specialized packaging



Emballage spécialisé-  
Specialized packaging



Installation d'affichage-  
Signs installation



Récupération de piles-  
Batteries containers



Fabrication d'enseignes-Signs manufacturing



Îlot de récupération modifiées -Modified recycling station



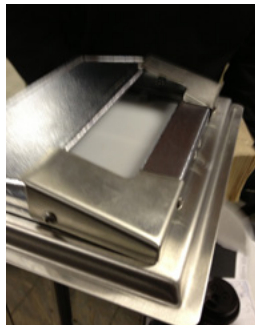
Installation d'affichage-  
Signs installation.



Modification de NOS produits-  
OUR products modifications



Amélioration de produits-  
Products upgrading



Amélioration de produits-  
Products upgrading



Produits sur mesure-  
Custom products



Structure solide-  
Solid frames

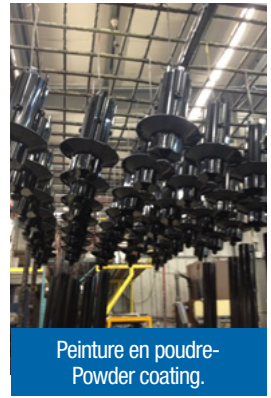
# PRODUITS SUR MESURE ET SUR DEMANDE CUSTOM PRODUCTS AND ON REQUEST



Installations spéciales- Special Installation



Montage selon vos besoins-Custom set-up



Peinture en poudre- Powder coating.



Nouveaux modèles tables pique-nique- Pic-nic new model



Peinture en poudre- Powder coating.



Peinture en poudre- Powder coating.



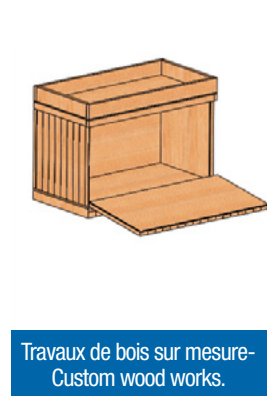
Supports à vélos spéciaux-Custom specials bicycle racks.



Supports à vélos spéciaux- Custom specials bicycle racks



Supports à vélos vertical- Vertical bicycle racks.



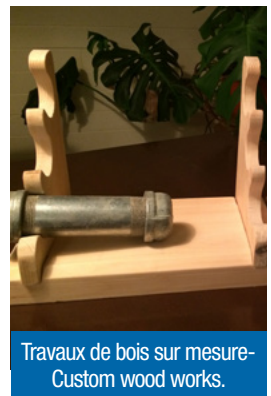
Travaux de bois sur mesure- Custom wood works.



Supports à vélos vertical-Vertical bicycle racks



Travaux d'acier inoxydable-Stainless custom jobs.



Travaux de bois sur mesure- Custom wood works.

# PRODUITS SUR MESURE ET SUR DEMANDE CUSTOM PRODUCTS AND ON REQUEST



Boîte sur mesure-  
Custom boxes



Boîte sur mesure-  
Custom boxes



Boîte sur mesure-  
Custom boxes



Caillebotis sur mesure-  
Custom Grating



Bollards B-6 Bollards



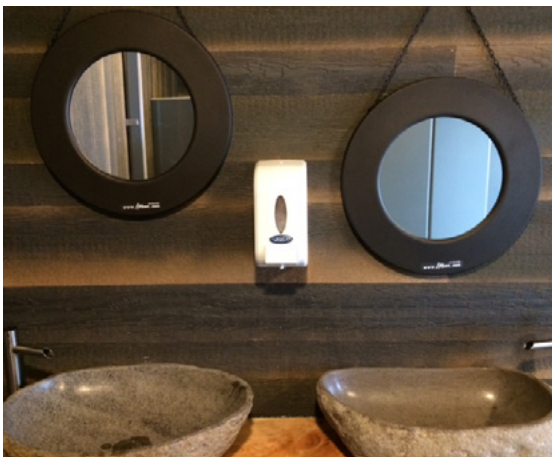
Descente handicapés-  
Disabled ramp



Comptoirs sur mesure-Custom-made counters



Enseignes- Signs



Miroir- Miror!



Affichage de tout genre-  
Signs of all kinds

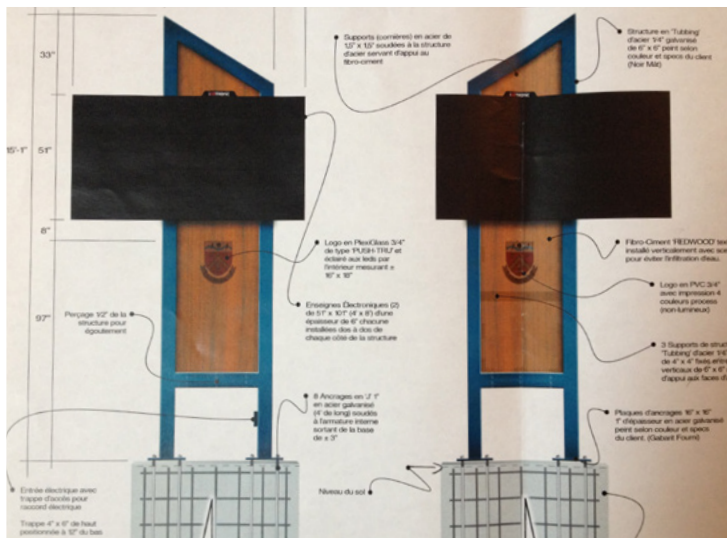


Table Kaktus Table

# PRODUITS DISTRIBUÉS DISTRIBUTED PRODUCTS



Abris-vélos , abris-fumeurs et abris-bus -  
Bicycle, smoking and bus shelter distribution



Fabrication partielle, vente et distribution d'enseigne électronique -  
Electronic sign partial manufacturing, sale and distribution

## Nouveaux contrats de distribution: Enseignes électroniques, fontaines à boire, abri-bus etc.

Nous distribuons d'autres produits que nous ne fabriquons pas nécessairement, comme par exemple: des fontaines à boire fabriquées à Montréal, des abri-bus, abri-vélos, abri-fumeurs fabriqués à Laval et des enseignes électroniques, etc.

**Nous fabriquons aussi BEAUCOUP de produits sur demande avec les mesures des clients. Que ce soit en métal de toutes sortes, en bois ou en plastique!**

## New distribution contracts: Electronic Signs, drinking fountains, bus shelters etc.

We distribute other products that We do not necessarily manufacture such as drinking fountains made in Montreal, bus shelters, smoking shelters, bicycle shelters manufactured in Laval. Electronic signs, etc.

**We also manufacture a LOT of "on demand" products with clients measures. We work with all kinds of metal, wood and plastic!**

# PRODUITS DISTRIBUÉS DISTRIBUTED PRODUCTS

## Tables pic-nic

Tables en bois fabriquées au Québec. Le cèdre rouge est beaucoup mieux que le bois traité car il ne fendillera pas et ne gauchira pas (crochir). De plus, en cèdre rouge la durée de vie est vraiment plus longue.

### **TABLES 8 pieds (Prix sur demande)**

Table 8' en cèdre rouge.

Table 8' en bois traité.

Table 8' en épinette kildrive séchée au four à teindre.

### **TABLES 6 pieds (Prix sur demande)**

Table 6' en cèdre rouge.

Table 6' en bois traité.

Table 6' en épinette kildrive séchée au four à teindre.

Table enfant 6' x 4' cèdre rouge non teint, coins arrondis.

**Avec installation et Montage:** 135.00\$ de l'unité plus 0.89\$ du km. Peinture ou teinture en extra.

**Sans installation:** plus transport et frais d'emballage. Prix incluant la quincaillerie complète nécessaire à l'installation (boulons, écrous, rondelles, vis). Tous changements à la conception normale de I Kkwit™ peuvent occasionner des extras. Payable 100% à la commande. Liste de prix sujet à changements sans préavis.

## Wooden pic-nic tables

Wooden tables made in Quebec that we distribute. The red cedar is much better than the treated wood because it will not crack or warp. Moreover, when made from red cedar it has a much longer lifespan.

### **TABLE 8 feet (Prices on request)**

Table 8' in red cedar.

Table 8' in treated wood.

Table 8' in kildrive spruce, dried in the oven to stain.

### **TABLE 6 feet (Prices on request)**

Table 6' in red cedar.

Table 6' in treated wood.

Table 6' in kildrive spruce, dried in the oven to stain.

Child table 6' x 4' in red cedar not stained, with rounded corners.

**With mounting and installation:** 135.00\$ per unit plus 0.529\$ per km. Extra for paint or stain.

**Without installation:** plus freight and packaging. Prices include a complete installation kit (bolts, nuts, washers, screws). Additional costs may be charged for any changes of the regular I Kkwit™ concept. Payable 100% at the order from everyone, for orders of 25 units and up. Prices are subject to changes, without prior notice.



# ACCESSOIRES DIVERS (PRIX SUR DEMANDE) ACCESSORIES LIST (PRICES ON REQUEST)

## COMPOSANTES DES CENDRIERS ASHTRAYS PARTS

---

- Cadenas Cendrier / Ashtray Padlock
- Cadenas Poubelle / Garbage/Recycle Bin Padlock
- Brosse de nettoyage cendrier / Ashtray Cleaning Brush
- Barrure cendrier B  b   / Lock Pin Baby ashtray
- Barrure cendrier CT-CM / Lock Pin CT-CM ashtray
- T  te BBT / BBT Head
- T  te CT / Head CT
- Base CT Aluminium Base
- Base BBT Aluminium Base
- Kit Collants BBM Sticker kit
- Kit Collants CT Sticker kit
- Tube Interne CT 12 L. inner container
- Tube Interne CM 6 L. inner container
- Tube Interne BBT 6 L. inner container
- Tube Interne BBM 2 L. inner container
- Tube Interne MBBM 1 L. inner container
- Base de b  ton 55 LBS (15" x 15" x 4") / Concrete block
- Base de b  ton 100 LBS ( 23.5" dia. x 3") / Concrete block
- Base de b  ton 300 LBS( 23.5" dia. x 9") / Concrete block
- Base de b  ton 500 LBS / Concrete block (+ Transport)
- Base de b  ton 1000 LBS / Concrete block (+ Transport)
- Base d'acier ord. Galv. B  b   / Ord. Galv. Steel Base Baby
- Base d'acier ord. CT Galv. / CT Ord. Galv. Steel Base
- Base d'acier sp  ciale BB / Special Steel Base BB\*
- Base d'acier sp  cial CT / Special Steel Base CT)\*
- Base galvanis   TABLE galvanised base
- Reponse-pieds TABLE feet stand
- Base d'acier sur pieux CT & BBT screw pile steel base
- Enl  vement cendrier / Ashtray Removal
- Enl  vement RV    2 pattes/ RV 2 poles removal
- Enl  vement poubelle/ garbage bin removal
- Pieu viss   / Screwed Pile
- Enfouissement base de b  ton -100 LBS  
Burial concrete base
- Kit Boulons CT complet/Complete Bolt kit for CT
- Kit Boulons BBT complet/Complete Bolt kit for BBT
- Kit Boulons CM, BBM, MBBM /  
Complete Bolt kit for CM, BBM, MBBM

## REMISE    NEUF COMPL  TE CENDRIER COMPREND ASHTRAY COMPLETE REFURBISHING INCLUDES

---

- Nettoyage / cleaning
- Sablage / sandblast
- Peinture / paint
- Cadenas / padlock
- Tube interne / inner container
- Base d'acier (selon mod  le) / steel base (depending on model)
- Couleur m  tallique (si besoin) / metallic color (if necessary)  
*Enl  vement et Installation en sus / Removal and installation extra*

## R  CIPIENTS POUR POUBELLES GARBAGE BINS INNER CONTAINERS

---

- Tube Interne rond PBC 89l. / PBC round inner containers
- Tube Interne PBM-T45l. (1/2) inner containers
- Tube Interne PBRC-i-3 (1/3) inner containers
- Tube Interne PBR-2-V & PBR-3-V 108 l. inner containers  
*(vendues seules sans poubelles / sold separately without garbage bins)*
- Tube Interne PBR-2-V & PBR-3-V 108 l. inner containers  
*(vendues AVEC poubelles / sold WITH the recycling station)*

Prix des articles sujet    changement sans pr  avis. Autres articles prix via soumission. Frais de kilom  trage peuvent   tre applicables.  
Prices are subject to changes without prior notice. Cost estimates for other articles available upon request. Mileage charges may be applicable.

# ACCESSOIRES DIVERS (PRIX SUR DEMANDE) ACCESSORIES LIST (PRICES ON REQUEST)

## COMPOSANTES DES POUBELLES GARBAGE BINS PARTS

---

- Base complète de poubelle PB avec peinture\* et penture / Complete PB base with hinge and paint\*
- Couvercle plat de poubelle PB avec peinture\* et penture / Flat PB cover with hinge and paint\*
- Tête PBC-i ou x PBC-i or x Head
- Barrure avant pour poubelle RONDE/ ROUND garbage bin front lock
- Pattes de nylon bacs- PBR- Inner container Nylon tabs
- Barrure inox - PBR- Stainless lock

## DÉCOUPE SPÉCIALE COUVERCLE POUBELLES / LASER SPECIAL CUTTING

- Avion (trou rond + fente) / Happy Plane (round hole + slot)
- Cyclope à sourire (trou recyclage + demie-lune déchets)
- Smiley cyclope (round hole plus half moon slot)

## BANCS BENCHES

---

- Patte de banc avec attache supérieure / Bench leg with top bracket
- Dessus de banc (assise) peint\* / Bench top seat (painted)
- Dossier de banc peint\* / Bench back (painted)
- Attache pour dossier de banc (Kit 2 Boomerang) Bench clip kit

## TABLES

---

*(Prix pour la table elle-même seulement. Se référer au prix des bancs pour la partie banc. / Price for the table only. Refer to the benches prices for the bench part.)*

- Patte de table avec attache supérieure et peint\* / Table leg with top bracket painted
- Dessus de table peint\* TPN Painted table top\*

*\*Non-métallique / \* Non metallic*

## SUPPORTS À VÉLOS RACK@BIKES RACK@BIKES BICYCLE RACKS

---

- Patte d'ancrage de Rack@Bikes avec attache supérieure et peint\* / Painted anchor leg for Rack@Bikes with top bracket
- Corps Rack@BiKes avec arceaux PRIX SELON longueur et peinture
- Rack @ BiKes skeleton with hoops PRICE according to length and paint

## POTEAUX CARRÉS SQUARE POLES

---

- Manchons / sleeves 2" x 2" x 4'
- Pôteau / Post 1 3/4 " x 1 3/4" x 5'

## DIVERS MISCELLANEOUS

---

- Tube de Colle PL / Tube of PL Glue
- Aérosol de Lubrifiant PL-100 / Lubricating spray PL-100
- Dégraissant Concentré 800 C / 1 Gal. (4 l.) Concentrated cleaner degreaser

Prix des articles sujet à changement sans préavis. Autres articles prix via soumission. Frais de kilométrage peuvent être applicables.  
Prices are subject to changes without prior notice. Cost estimates for other articles available upon request. Mileage charges may be applicable.

# Le problème... The Problem...



# La solution... The Solution...



Tous nos produits sont **100% aluminium**  
All our products are **100% aluminium** made

 **400**  
couleurs disponibles  
colors available



**VENTE DIRECTE  
DIRECT SALES  
438 270-7676  
[info@ikkwit.com](mailto:info@ikkwit.com)**

9412-8345 Québec Inc.  
Chambly (Québec) Canada

[www.ikkwit.com](http://www.ikkwit.com)



Modèle no.:  
**MT**  
Haut./Hht : 11 in.  
Diam. : 4 in.



Modèle no.:  
**MBBM**  
Haut./Hht : 20 in.  
Diam. : 4 in.



Modèle no.:  
**BBM**  
Haut./Hht : 30 in.  
Diam. : 4 in.



Modèle no.:  
**CM**  
Haut./Hht : 32 in.  
Diam. : 6 in.



Modèle no.:  
**BBT**  
Haut./Hht : 51 in.  
Diam. : 4 in.



Modèle no.:  
**CT**  
Haut./Hht : 53 in.  
Diam. : 6 in.

