



# series 38

super durable powder coatings





TIGER Drylac® 38/10130  
**Seashell White** 30±5\*



TIGER Drylac® 38/10070  
**Bone White** 30±5\*



TIGER Drylac® 38/70048  
**Sky Grey** 30±5\*



TIGER Drylac® 38/15003  
**Almond** 30±5\*



TIGER Drylac® 38/15012  
**Sandstone** 30±5\*



TIGER Drylac® 38/70070  
**Taupe** 30±5\*



TIGER Drylac® 38/15002  
**Sierra Tan** 30±5\*



TIGER Drylac® 38/70025  
**Ash Grey** 30±5\*



TIGER Drylac® 38/70019  
**Slate Grey** 30±5\*



TIGER Drylac® 38/60014  
**Medium Bronze** 30±5\*



TIGER Drylac® 38/60018  
**Koko Brown** 30±5\*



TIGER Drylac® 38/30033  
**Boysenberry** 20±5\*



TIGER Drylac® 38/30041  
**Redwood** 30±5\*



TIGER Drylac® 38/30028  
**Brick Red** 20±5\*



TIGER Drylac® 38/50035  
**Seafoam Green Metallic**



TIGER Drylac® 38/60006  
**Aged Copper** 20±5\*



TIGER Drylac® 38/50080  
**Ivy Green** 30±5\*



TIGER Drylac® 38/50037  
**Classic Green** 30±5\*



TIGER Drylac® 38/50110  
**Hartford Green** 30±5\*



TIGER Drylac® 38/60080  
**Statuary Bronze** 30±5\*



TIGER Drylac® 38/60060  
**Medium Bronze Metallic\***



TIGER Drylac® 38/40025  
**Interstate Blue** 20±5\*



TIGER Drylac® 38/40051  
**Military Blue** 30±5\*



TIGER Drylac® 38/70049  
**Silver Grey** 30±5\*



TIGER Drylac® 38/80020  
**Jet Black** 30±5\*

\*Gloss level according to Gardner 60° ASTM D523. Paper and ink limitations of color samples as well as influence from heat and light account for differences from actual powder coatings.



TIGER Drylac® 38/00001  
**Clear 90+**



TIGER Drylac® 38/10007  
**Bianco 302** 85±5\*



TIGER Drylac® 38/70032  
**Grey Classic 303** 85±5\*



TIGER Drylac® 38/70056  
**Grey Classic 310** 85±5\*



TIGER Drylac® 38/15009  
**Crème 305** 85±5\*



TIGER Drylac® 38/15007  
**Crème 303** 85±5\*



TIGER Drylac® 38/15005  
**Crème 301** 85±5\*



TIGER Drylac® 38/60021  
**Marrone 305** 85±5\*



TIGER Drylac® 38/60026  
**Marrone 306** 85±5\*



TIGER Drylac® 38/60039  
**Marrone 308** 85±5\*



TIGER Drylac® 38/50039  
**Highland 305** 85±5\*



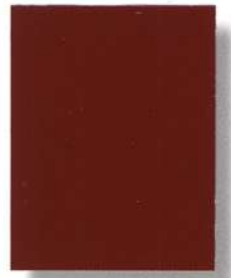
TIGER Drylac® 38/50038  
**Highland 304** 85±5\*



TIGER Drylac® 38/50040  
**Highland 306** 85±5\*



TIGER Drylac® 38/50041  
**Highland 307** 85±5\*



TIGER Drylac® 38/60031  
**Marrone 302** 85±5\*



TIGER Drylac® 38/30035  
**Rosso 306** 85±5\*



TIGER Drylac® 38/30034  
**Rosso 305** 85±5\*



TIGER Drylac® 38/25006  
**Sunset 302** 85±5\*



TIGER Drylac® 38/20011  
**Deore 307** 85±5\*



TIGER Drylac® 38/20009  
**Deore 305** 85±5\*



TIGER Drylac® 38/40031  
**Azzurro 305** 85±5\*



TIGER Drylac® 38/40033  
**Azzurro 307** 85±5\*



TIGER Drylac® 38/70054  
**Grey Classic 308** 85±5\*



TIGER Drylac® 38/70061  
**Grey Classic 314** 85±5\*



TIGER Drylac® 38/80002  
**Carbon 301** 85±5\*

\*Gloss level according to Gardner 60° ASTM D523. Paper and ink limitations of color samples as well as influence from heat and light account for differences from actual powder coatings.



TIGER Drylac® 38/90003  
**Argento 301 Metallic**



TIGER Drylac® 38/90010  
**Marine Silver**



TIGER Drylac® 38/90007  
**Argento 305 Metallic**



TIGER Drylac® 38/90011  
**Argento 308 Metallic**



TIGER Drylac® 38/90015  
**Pearl Dark Grey**



TIGER Drylac® 38/90016  
**Argento 312 Metallic**



TIGER Drylac® 38/90018  
**Argento 314 Metallic**



TIGER Drylac® 38/60090  
**Dark Anodized Bronze 20±5°**



TIGER Drylac® 38/30048  
**Pearl Ruby Red**



TIGER Drylac® 38/30043  
**Rosso 302 Metallic**



TIGER Drylac® 38/60064  
**Pearl Copper**



TIGER Drylac® 38/30042  
**Rosso 301 Metallic**



TIGER Drylac® 38/50131  
**Pearl Green**



TIGER Drylac® 38/50135  
**Pearl Opal Green**



TIGER Drylac® 38/50043  
**Highland 301 Metallic**



TIGER Drylac® 38/40035  
**Azzurro 301 Metallic**



TIGER Drylac® 38/40127  
**Pearl Night Blue**



TIGER Drylac® 38/20014  
**Deore 302 Metallic**



TIGER Drylac® 38/15018  
**Champagne 302 Metallic**



TIGER Drylac® 38/15017  
**Champagne 301 Metallic**



TIGER Drylac® 38/15021  
**Champagne 304 Metallic**



TIGER Drylac® 38/20013  
**Deore 301 Metallic**



TIGER Drylac® 38/15020  
**Champagne 303 Metallic**



TIGER Drylac® 38/90009  
**Argento 307 Metallic**



TIGER Drylac® 38/91020  
**Anodized Silver**

\*Gloss level according to Gardner 60° ASTM D523. Paper and ink limitations of color samples as well as influence from heat and light account for differences from actual powder coatings.